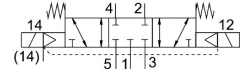



# Solenoid valve VSVA-B-P53C-Z-D1-1T1L

Part number: 8034842

FESTO



 [General operating condition](#)

## Data sheet

| Feature   | Value   |
|---|---|
| Valve function  | 5/3-way, closed   |
| Type of actuation                                     | Electrical  |
| Construction width                                    | 42 mm   |
| Standard nominal flow rate (standardised to DIN 1343) | 1200 l/min  |
| pneumatic working port                                | Sub-base size 1 to ISO 5599-2<br>G3/8                             |
| Operating voltage                                     | 24 V DC   |
| Operating pressure                                    | -0.09 MPa ... 1 MPa   |
| Operating pressure                                    | -0.9 bar ... 10 bar   |
| Design  | Piston gate valve   |
| Approval  | c UL us - Recognised (Oil)  |
| Degree of protection                                  | IP65<br>NEMA 4  |
| Exhaust-air function                                  | Can be throttled<br>Via throttle plate<br>Via individual sub-base |
| Sealing principle                                     | Soft  |
| Mounting position                                     | Any   |
| Manual override                                       | Concealed   |
| Type of piloting                                      | Piloted   |
| Pilot air supply                                      | External  |
| Flow direction  | Any   |
| Symbol  | 00992992  |
| Signal status display                                 | LED   |
| Pilot pressure  | 0.3 MPa ... 1 MPa   |
| Pilot pressure  | 3 bar ... 10 bar  |
| Flow rate of valve                                    | 1700 l/min  |
| Flow rate of valve on individual sub-base             | 1400 l/min  |
| Valve flow rate, pneumatically linked, flow optimized | 1690 l/min  |
| Flow rate of pneumatically interlinked valve          | 1200 l/min  |
| Switching time off                                    | 65 ms   |
| Switching time on                                     | 22 ms   |
| Max. positive test pulse with 0 signal                | 1400 µs   |
| Max. negative test pulse with 1 signal                | 900 µs  |
| Nominal pick-up current per solenoid coil             | 72 mA to 30 ms  |
| Characteristic coil data                              | 24 V DC: 1.6 W  |
| Immunity to surge                                     | 2.5 kV  |

| Feature                            | Value  |
|------------------------------------|--|
| Pollution degree                   | 3  |
| Permissible voltage fluctuations   | +/-10%   |
| Operating medium                   | Compressed air to ISO 8573-1:2010 [7:4:4]  |
| Note on operating and pilot medium | Lubricated operation possible (in which case lubricated operation will always be required) |
| Vibration resistance               | Transport application test with severity level 2 to FN 942017-4 and EN 60068-2-6           |
| Shock resistance                   | Shock test with severity level 2 to FN 942017-5 and EN 60068-2-27                          |
| Corrosion resistance class CRC     | 0 - No corrosion stress  |
| LABS (PWIS) conformity             | VDMA24364-B1/B2-L  |
| Relative air humidity              | 0 - 90%  |
| Ambient temperature                | -5 °C ... 50 °C  |
| Product weight                     | 456 g  |
| Electrical connection              | Plug-in<br>To ISO 5599-2   |
| Type of mounting                   | On sub-base  |
| Pilot air port 12/14               | Sub-base size 1 to ISO 5599-2  |
| Pilot exhaust port 82/84           | Ducted<br>Not ducted as per standard<br>Either:  |
| Pneumatic connection, port 1       | Sub-base size 1 to ISO 5599-2  |
| Pneumatic connection, port 2       | Sub-base size 1 to ISO 5599-2  |
| Pneumatic connection, port 3       | Sub-base size 1 to ISO 5599-2  |
| Pneumatic connection, port 4       | Sub-base size 1 to ISO 5599-2  |
| Pneumatic connection, port 5       | Sub-base size 1 to ISO 5599-2  |
| Note on materials                  | RoHS compliant   |
| Material seals                     | Fluoro rubber<br>HNBR<br>NBR   |
| Material housing                   | Die-cast aluminium<br>Process automation   |
| Material screws                    | Galvanised steel   |