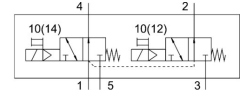
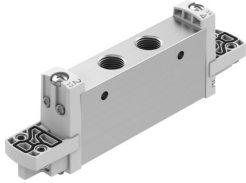


# Solenoid valve VUVG-L14-T32U-M-G18-P1

Part number: 8033527

FESTO



[PDF General operating condition](#)

## Data sheet

Feature	Value
Valve function	2x3/2 open monostable
Type of actuation	Electrical
Valve size	14 mm
Standard nominal flow rate (standardised to DIN 1343)	480 l/min ... 500 l/min
pneumatic working port	G1/8
Operating pressure	0.3 MPa ... 0.8 MPa
Operating pressure	3 bar ... 8 bar
Design	Piston gate valve
Type of reset	Mechanical spring
Approval	c UL us - Recognised (Oil)
CE mark (see declaration of conformity)	To EU EMC Directive To EU Low Voltage Directive In accordance with EU RoHS Directive
UKCA marking (see declaration of conformity)	To UK RoHS instructions To UK regulations for electrical equipment
Certificate issuing authority	UL MH19482
Degree of protection	IP65 With electric pilot valve and plug socket
Nominal size	4.3 mm
Exhaust-air function	Can be throttled
Sealing principle	Soft
Mounting position	Any
Type of piloting	Piloted
Pilot air supply	Internal
Symbol	00995244
lap	Overlap
Pilot pressure	0.35 MPa ... 0.8 MPa
Pilot pressure	3.5 bar ... 8 bar
Suitability for vacuum	No
Switching time off	13 ms
Switching time on	14 ms
Duty cycle	100%
Max. positive test pulse with 0 signal	700 µs
Max. negative test pulse with 1 signal	900 µs
Operating medium	Compressed air to ISO 8573-1:2010 [7:4:4]
Note on operating and pilot medium	Lubricated operation possible (in which case lubricated operation will always be required)

Feature	Value
Vibration resistance	Transport application test with severity level 2 to FN 942017-4 and EN 60068-2-6
Shock resistance	Shock test with severity level 2 to FN 942017-5 and EN 60068-2-27
Corrosion resistance class CRC	2 - Moderate corrosion stress
LABS (PWIS) conformity	VDMA24364-B1/B2-L
Cleanroom suitability, measured according to ISO 14644-14	Class 5 according to ISO 14644-1
Media temperature	-5 °C ... 60 °C
Ambient temperature	-5 °C ... 60 °C
Product weight	56 g
Electrical connection	Via electric pilot valve
Type of mounting	On manifold rail With through-hole
Pneumatic connection, port 1	G1/8
Pneumatic connection, port 2	G1/8
Pneumatic connection, port 4	G1/8
Pneumatic connection, port 5	G1/8
Pilot control interface	To ISO 15218
Note on materials	RoHS compliant
Material seals	HNBR NBR
Material housing	Wrought aluminium alloy