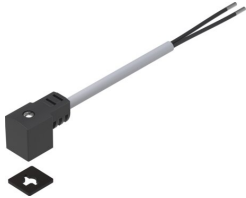


Connecting cable NEBV-C1SW2L-P-K-2.5-N-LE2-S9

Part number: 8032623

FESTO



 General operating condition

Data sheet

Feature	Value
Signal status display	Yellow LED
Additional functions	Protective circuit
Cable designation	Without inscription label holder
Frequency of connection	50
Product weight	120 g
Electrical connection 1, function	Field device side
Electrical connection 1, design	Square
Electrical connection 1, connection type	Socket, narrow
Electrical connection 1, cable outlet	Angled
Electrical connection 1, note on cable outlet	Can be rotated 180°
Electrical connection 1, connector system	Plug pattern type C to EN 175301-803
Electrical connection 1, number of connections/cores	4
Electrical connection 1, used connections/cores	2
Electrical connection 1, type of mounting	On solenoid valve via M2.5 central screw
Electrical connection 1, connection pattern	00995797
Electrical connection 2, function	Control side
Electrical connection 2, connection type	Cable
Electrical connection 2, connector system	Open end
Electrical connection 2, number of connections/cores	2
Electrical connection 2, used connections/cores	2
Operational voltage range DC	20.4 V ... 26.4 V
Nominal operating voltage DC	24 V
Current rating at 40° C	6 A
Immunity to surge	2.4 kV
Reverse polarity protection	Bipolar
Protective conductor connection	Not provided
Cable length	2.5 m
Cable characteristic	Standard
Test conditions cable	Test conditions on request
Bending radius, moving cable	≥52 mm
Cable diameter	5.2 mm
Cable diameter tolerance	± 0.1 mm
Cable structure	2 x 0.75 mm ²
Nominal cross section conductor	0.75 mm ²
Degree of protection	IP65 IP67

Feature	Value
Note on degree of protection	In mounted state
Ambient temperature	-20 °C ... 70 °C
Ambient temperature with moving cable	-5 °C ... 70 °C
CE mark (see declaration of conformity)	In accordance with EU RoHS Directive
UKCA marking (see declaration of conformity)	To UK RoHS instructions
LABS (PWIS) conformity	VDMA24364-B2-L
Note on materials	RoHS compliant
Pollution degree	3
Note on the contamination level	In mounted state
Corrosion resistance class CRC	3 - high corrosion stress
Material cable sheath	PVC
Cable sheath colour	Grey
Material housing	TPE-U(PU)
Housing colour	Black
Material screws	Stainless steel
Material seals	HNBR
Material electrical contact	Tin-plated copper alloy
Material insulating sheath	PVC