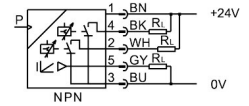


Pressure sensor SPAW-P6R-G14F-2NA-M12

Part number: 8022815

FESTO



[General operating condition](#)

Data sheet

Feature	Value
Symbol	00995379
Approval	RCM c UL us - Listed (Oil)
CE mark (see declaration of conformity)	To EU EMC Directive In accordance with EU RoHS Directive
UKCA marking (see declaration of conformity)	To UK RoHS instructions
Note on materials	RoHS compliant
Measured variable	Relative pressure
Measurement method	Piezoresistive pressure sensor
Start value for pressure measuring range	0 MPa
Start value for pressure measuring range	0 bar
Start value for pressure measuring range	0 psi
End value for pressure measuring range	0.6 MPa
End value for pressure measuring range	6 bar
End value for pressure measuring range	87 psi
Overload pressure	1.2 MPa
Overload pressure	12 bar
Overload pressure	174 psi
Operating medium	Liquid media Gaseous media
Media temperature	-20 °C ... 85 °C
Ambient temperature	0 °C ... 80 °C
Accuracy in ± % FS	1 %FS
Repetition accuracy in ± %FS	0.15 %FS
Switching output	2xNPN
Switching function	Freely programmable
Switching element function	Switchable
Max. output current	250 mA
Analogue output	4 - 20 mA
Rise time	3 ms
Short circuit current rating	Yes
Operational voltage range DC	15 V ... 35 V
Reverse polarity protection	For operating voltage
Electrical connection 1, connection type	Plug
Electrical connection 1, connector system	M12x1, A-coded to EN 61076-2-101
Electrical connection 1, number of connections/cores	5

Feature	Value
Electrical connection 1, type of mounting	Screw-type lock Not rotatable
Electrical connection 1, compatible type of mounting	Compatible with rotatable screw-type lock
Electrical connection 1, connection pattern	00995383
Type of mounting	With female thread With accessories
Mounting position	Any
Pneumatic connection	Female thread G1/4
Product weight	230 g
Material housing	ABS High-alloy stainless steel
Material in contact with the medium	High-alloy stainless steel
Display type	4-place alphanumeric LED indicator
Displayable units	MPa bar kPa kg/cm ² psi
Switching status indication	LED red
Setting options	Via display and buttons
Protection against tampering	PIN code
Setting range threshold value	0.5 % ... 100 %
Setting range hysteresis	0.5 % ... 99.5 %
Degree of protection	IP65 IP67
Corrosion resistance class CRC	4 - Very high corrosion stress
LABS (PWIS) conformity	VDMA24364 zone III