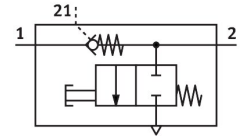


# Check valve VBNF-LBA-G18-Q6-F1A

Part number: 8001460

FESTO



[PDF](#) General operating condition

## Data sheet

| Feature  | Value  |
|--|--|
| Valve function                                     | Piloted non-return function  |
| Selection of additional functions                  | Manual exhausting  |
| Pneumatic connection, port 1                       | QS-6   |
| Pneumatic connection, port 2                       | G1/8   |
| Pilot air port 21                                  | QS-6   |
| Type of mounting                                   | Screw-in   |
| Operating pressure                                 | 0.02 MPa ... 1 MPa   |
| Operating pressure                                 | 0.2 bar ... 10 bar   |
| Pilot pressure                                     | 0.2 MPa ... 1 MPa  |
| Pilot pressure                                     | 2 bar ... 10 bar   |
| Pilot pressure                                     | 29 psi ... 145 psi   |
| Ambient temperature                                | -10 °C ... 60 °C   |
| Material housing                                   | PBT  |
| Operating medium                                   | Compressed air to ISO 8573-1:2010 [7:4:4]  |
| Mounting position                                  | Any  |
| Type act., cont. n.-r. func.                       | Pneumatic  |
| Manual exhaust function                            | Non-detenting  |
| Symbol   | 00991957   |
| Rotatability                                       | 360°/no continuous swivelling permissible  |
| Operating pressure complete temperature range      | 0.02 MPa ... 1 MPa   |
| Operating pressure complete temperature range      | 0.2 bar ... 10 bar   |
| Operating pressure complete temperature range      | 2.9 psi ... 145 psi  |
| Standard flow rate 1->2 (6-0)                      | 500 l/min  |
| Standard nominal flow rate 1->2 (6-5)              | 260 l/min  |
| Switching time off                                 | 9 ms   |
| Switching time on                                  | 6 ms   |
| Explosion protection                               | Zone 2 (ATEX)<br>Zone 22 (ATEX)  |
| Note on operating and pilot medium                 | Lubricated operation possible (in which case lubricated operation will always be required) |
| Corrosion resistance class CRC                     | 2 - Moderate corrosion stress  |
| LABS (PWIS) conformity                             | VDMA24364-B1/B2-L  |
| Suitability for the production of Li-ion batteries | Suitable for battery production with reduced Cu/Zn/Ni values (F1a)                         |
| Media temperature                                  | -10 °C ... 60 °C   |
| Pilot medium                                       | Compressed air to ISO 8573-1:2010 [7:4:4]  |
| Nominal torque                                     | 6 Nm   |

| <b>Feature</b>                          | <b>Value</b>            |
|---|-------------------------|
| Tolerance for nominal tightening torque | ±20%                    |
| Product weight                          | 27.3 g                  |
| Material covering                       | ES-BE                   |
| Note on materials                       | RoHS compliant          |
| Material cover                          | PBT                     |
| Material seals                          | NBR                     |
| Material hollow bolt                    | Wrought aluminium alloy |
| Material release ring                   | POM                     |