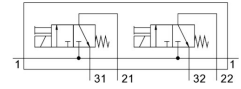
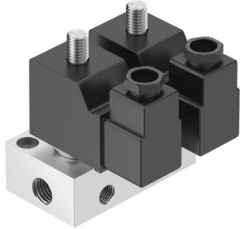


Solenoid valve BMCH-2-3-1/8

Part number: 6686

FESTO



 General operating condition

Data sheet

Feature	Value
Valve function	2x3/2 closed monostable
Type of actuation	Electrical
Standard nominal flow rate (standardised to DIN 1343)	160 l/min
pneumatic working port	G1/8
Operating pressure	-0.095 MPa ... 0.7 MPa
Operating pressure	-0.95 bar ... 7 bar
Design	Poppet valve with spring return
Type of reset	Mechanical spring
Degree of protection	IP65
Nominal size	2.5 mm
Sealing principle	Soft
Max. number of valve positions	2
Type of piloting	Direct
Symbol	00995421
Power consumption, pull	30 W
Power consumption, hold	22 W
Operating medium	Compressed air to ISO 8573-1:2010 [7:4:4]
Note on operating and pilot medium	Lubricated operation possible (in which case lubricated operation will always be required)
LABS (PWIS) conformity	VDMA24364-B2-L
Media temperature	-10 °C ... 60 °C
Ambient temperature	-5 °C ... 40 °C
Product weight	680 g
Electrical connection	Plug
Type of mounting	With through-hole
Pneumatic connection, port 1	G1/4
Pneumatic connection, port 2	G1/8
Pneumatic connection, port 3	G1/8
Material housing	Aluminium