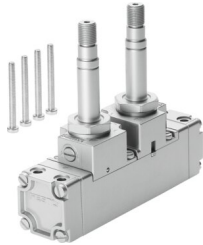


Solenoid valve CJM-5/2-1/4-CH

Part number: 5955

FESTO



[PDF](#) General operating condition

Data sheet

Feature	Value
Valve function	5/2-way, double solenoid
Type of actuation	Electrical
Standard nominal flow rate (standardised to DIN 1343)	1400 l/min
pneumatic working port	Sub-base
Operating pressure	1.5 bar ... 10 bar
Nominal size	6.5 mm
Mounting position	Any
Manual override	Non-detenting
Type of piloting	Piloted
Flow direction	Non-reversible
Symbol	00991005
Max. switching frequency	40 Hz
Switching time on	28 ms
Operating medium	Compressed air to ISO 8573-1:2010 [7:4:4]
Note on operating and pilot medium	Lubricated operation possible (in which case lubricated operation will always be required)
LABS (PWIS) conformity	VDMA24364 zone III
Media temperature	-10 °C ... 60 °C
Type of mounting	On sub-base
Pilot air port 12	G1/8
Pilot air port 14	G1/8
Pneumatic connection, port 1	G1/4
Pneumatic connection, port 2	G1/4
Pneumatic connection, port 3	G1/4
Pneumatic connection, port 4	G1/4
Pneumatic connection, port 5	G1/4
Material seals	NBR
Material housing	Wrought aluminium alloy
Material membrane	PUR