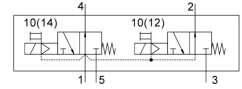


# Solenoid valve

## VUVS-LT20-T32U-MD-G18-F7

Part number: 577500

FESTO



General operating condition

## Data sheet

| Feature   | Value  |
|---|--|
| Valve function  | 2x3/2 open monostable  |
| Type of actuation   | Electrical   |
| Valve size  | 21 mm  |
| Standard nominal flow rate (standardised to DIN 1343)     | 600 l/min  |
| pneumatic working port                                    | G1/8   |
| Operating pressure  | 0.25 MPa ... 1 MPa   |
| Operating pressure  | 2.5 bar ... 10 bar   |
| Design  | Poppet seat  |
| Type of reset   | Mechanical spring  |
| Approval  | c UL us - Recognised (Oil)   |
| Nominal size  | 5.2 mm   |
| Exhaust-air function                                      | Can be throttled   |
| Sealing principle   | Soft   |
| Mounting position   | Any  |
| Manual override   | Detenting<br>Non-detenting   |
| Type of piloting  | Piloted  |
| Pilot air supply  | Internal   |
| Flow direction  | Non-reversible   |
| Symbol  | 00995470   |
| lap   | Underlap   |
| b value   | 0.29   |
| C value   | 2.3 l/sbar   |
| Switching time off  | 23 ms  |
| Switching time on   | 9 ms   |
| Max. positive test pulse with 0 signal                    | 1900 µs  |
| Max. negative test pulse with 1 signal                    | 2700 µs  |
| Operating medium  | Compressed air to ISO 8573-1:2010 [7:4:4]  |
| Note on operating and pilot medium                        | Lubricated operation possible (in which case lubricated operation will always be required) |
| Vibration resistance                                      | Transport application test with severity level 2 to FN 942017-4 and EN 60068-2-6           |
| Shock resistance  | Shock test with severity level 2 to FN 942017-5 and EN 60068-2-27                          |
| Corrosion resistance class CRC                            | 2 - Moderate corrosion stress  |
| LABS (PWIS) conformity                                    | VDMA24364-B1/B2-L  |
| Cleanroom suitability, measured according to ISO 14644-14 | Class 6 according to ISO 14644-1   |

| Feature                      | Value                                     |
|------------------------------|---|
| Media temperature            | -10 °C ... 60 °C                          |
| Pilot medium                 | Compressed air to ISO 8573-1:2010 [7:4:4] |
| Ambient temperature          | -5 °C ... 60 °C                           |
| Product weight               | 180 g                                     |
| Type of mounting             | On manifold rail<br>With through-hole     |
| Breather connection          | Not ducted                                |
| Pilot exhaust port 82        | M5  |
| Pilot exhaust port 84        | M5  |
| Pneumatic connection, port 1 | G1/8                                      |
| Pneumatic connection, port 2 | G1/8                                      |
| Pneumatic connection, port 3 | G1/8                                      |
| Note on materials            | RoHS compliant                            |
| Material seals               | HNBR<br>NBR<br>TPE-U(PU)                  |
| Material housing             | Die-cast aluminium<br>painted             |
| Material screws              | Galvanised steel                          |