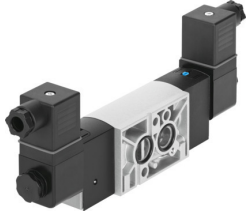


Solenoid valve

VSNC-F-B52-D-N14-FN-1A1-EX4-A

FESTO

Part number: 577287



 General operating condition

Data sheet

Feature	Value
Valve function	5/2-way, double solenoid
Type of actuation	Electrical
Construction width	32 mm
Standard nominal flow rate (standardised to DIN 1343)	1350 l/min
pneumatic working port	Connection pattern to NAMUR
Operating voltage	24 V DC
Operating pressure	0.15 MPa ... 0.8 MPa
Operating pressure	1.5 bar ... 8 bar
Design	Piston gate valve
Explosion protection certification outside the EU	EPL Db (IEC-EX) EPL Ga (IEC-EX)
Certificate issuing authority	DNVGL-TAA000011J
ATEX category gas	II 2G
ATEX category dust	II 2D
Explosion ignition protection type for gas	Ex ia IIC T6 Ga
Explosion ignition protection type for dust	Ex t IIIC T80°C Db
Explosion ambient temperature	-40°C ≤ Ta ≤ +50°C
Degree of protection	IP65 With plug socket To IEC 60529
Exhaust-air function	Can be throttled
Sealing principle	Soft
Mounting position	Any
Conforms to standard	VDI/VDE 3845 (NAMUR)
Manual override	Detenting Non-detenting
Type of piloting	Piloted
Pilot air supply	Internal
Flow direction	Non-reversible
Symbol	00991005
lap	Overlap
Signal status display	With accessories
b value	0.4
C value	5.6 l/sbar
Switching time reversal	20 ms
Duty cycle	100%
Max. input voltage Ui	28 V

Feature	Value
Max. input current Ii	115 mA
Permissible voltage fluctuations	+/-10%
Explosion protection	Zone 0 (IEC-EX) Zone 1 (ATEX) Zone 2 (ATEX) Zone 21 (ATEX) Zone 21 (IEC-EX) Zone 22 (ATEX)
Operating medium	Compressed air to ISO 8573-1:2010 [7:4:4]
Note on operating and pilot medium	Lubricated operation possible (in which case lubricated operation will always be required)
Corrosion resistance class CRC	2 - Moderate corrosion stress
LABS (PWIS) conformity	VDMA24364-B2-L
Media temperature	-20 °C ... 60 °C
Ambient temperature	-20 °C ... 60 °C
Product weight	685 g
Electrical connection	To EN 175301-803
Type of mounting	With through-hole
Breather connection	Not ducted
Pneumatic connection, port 1	1/4 NPT
Pneumatic connection, port 2	Connection pattern to NAMUR
Pneumatic connection, port 3	1/4 NPT
Pneumatic connection, port 4	Connection pattern to NAMUR
Pneumatic connection, port 5	1/4 NPT
Note on materials	RoHS compliant
Material seals	NBR
Material housing	Wrought aluminium alloy
Material screws	Galvanised steel