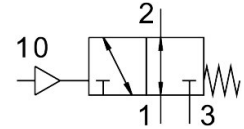


Pneumatic valve VUWS-L25-M32U-M-G14

Part number: 575500

FESTO



[PDF](#) General operating condition

Data sheet

| Feature | Value |
|---|--|
| Valve function | 3/2-way, single solenoid, open |
| Type of actuation | Pneumatic |
| Valve size | 26.5 mm |
| Standard nominal flow rate (standardised to DIN 1343) | 1000 l/min |
| pneumatic working port | G1/4 |
| Operating pressure | -0.09 MPa ... 1 MPa |
| Operating pressure | -0.9 bar ... 10 bar |
| Design | Piston gate valve |
| Type of reset | Mechanical spring |
| Approval | c UL us - Recognised (Oil) |
| Nominal size | 6.3 mm |
| Exhaust-air function | Can be throttled |
| Sealing principle | Soft |
| Mounting position | Any |
| Manual override | None |
| Type of piloting | Direct |
| Pilot air supply | Internal |
| Flow direction | Reversible |
| Symbol | 00995556 |
| lap | Overlap |
| Pilot pressure | 0.25 MPa ... 1 MPa |
| Pilot pressure | 2.5 bar ... 10 bar |
| Switching time off | 43 ms |
| Switching time on | 10 ms |
| Explosion protection | The information in the certificate must be observed! Zone 1 (ATEX) Zone 2 (ATEX) Zone 21 (ATEX) Zone 22 (ATEX) |
| Operating medium | Compressed air to ISO 8573-1:2010 [7:4:4] |
| Note on operating and pilot medium | Lubricated operation possible (in which case lubricated operation will always be required) |
| Vibration resistance | Transport application test with severity level 2 to FN 942017-4 and EN 60068-2-6 |
| Shock resistance | Shock test with severity level 2 to FN 942017-5 and EN 60068-2-27 |
| Corrosion resistance class CRC | 2 - Moderate corrosion stress |
| LABS (PWIS) conformity | VDMA24364-B1/B2-L |

| Feature | Value |
|---|---|
| Cleanroom suitability, measured according to ISO 14644-14 | Class 6 according to ISO 14644-1 |
| Media temperature | -10 °C ... 60 °C |
| Pilot medium | Compressed air to ISO 8573-1:2010 [7:4:4] |
| Ambient temperature | -10 °C ... 60 °C |
| Product weight | 241 g |
| Type of mounting | On manifold rail With through-hole |
| Breather connection | Not ducted |
| Pilot air port 10 | M5 |
| Pneumatic connection, port 1 | G1/4 |
| Pneumatic connection, port 2 | G1/4 |
| Pneumatic connection, port 3 | G1/4 |
| Note on materials | RoHS compliant |
| Material seals | HNBR NBR |
| Material housing | painted |
| Material piston slide | Wrought aluminium alloy |
| Material screws | Galvanised steel |