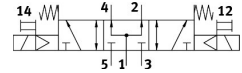
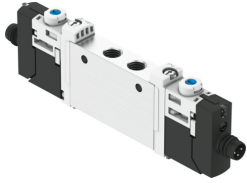



# Solenoid valve VUVG-L10-P53U-T-M7-1R8L

Part number: 574224

FESTO



 [General operating condition](#)

## Data sheet

| Feature   | Value  |
|---|--|
| Valve function  | 5/3-way, pressurised   |
| Type of actuation                                     | Electrical   |
| Valve size  | 10 mm  |
| Standard nominal flow rate (standardised to DIN 1343) | 300 l/min ... 320 l/min  |
| pneumatic working port                                | M7   |
| Operating voltage                                     | 24 V DC  |
| Operating pressure                                    | 0.3 MPa ... 0.8 MPa  |
| Operating pressure                                    | 3 bar ... 8 bar  |
| Design  | Piston gate valve  |
| Type of reset   | Mechanical spring  |
| Approval  | RCM<br>c UL us - Recognised (Oil)  |
| CE mark (see declaration of conformity)               | To EU EMC Directive<br>To EU Low Voltage Directive<br>In accordance with EU RoHS Directive |
| UKCA marking (see declaration of conformity)          | To UK RoHS instructions<br>To UK regulations for electrical equipment                      |
| Degree of protection                                  | IP65<br>With plug socket   |
| Nominal size  | 3.5 mm   |
| Exhaust-air function                                  | Can be throttled   |
| Sealing principle                                     | Soft   |
| Mounting position                                     | Any  |
| Manual override                                       | Detenting<br>Non-detenting<br>Concealed  |
| Type of piloting                                      | Piloted  |
| Pilot air supply                                      | Internal   |
| Symbol  | 00992895   |
| lap   | Indeterminate overlap  |
| Pilot pressure  | 0.3 MPa ... 0.8 MPa  |
| Pilot pressure  | 3 bar ... 8 bar  |
| Suitability for vacuum                                | No   |
| Switching time off                                    | 30 ms  |
| Switching time on                                     | 11 ms  |
| Switching time reversal                               | 14 ms  |
| Duty cycle  | 100%   |
| Max. positive test pulse with 0 signal                | 700 µs   |

| Feature   | Value  |
|---|--|
| Max. negative test pulse with 1 signal                    | 900 µs   |
| Characteristic coil data                                  | 24 V DC: 1.0 W   |
| Permissible voltage fluctuations                          | +/-10%   |
| Operating medium  | Compressed air to ISO 8573-1:2010 [7:4:4]  |
| Note on operating and pilot medium                        | Lubricated operation possible (in which case lubricated operation will always be required) |
| Vibration resistance                                      | Transport application test with severity level 2 to FN 942017-4 and EN 60068-2-6           |
| Restrictions for environmental and media temperature      | -5 - 50 °C<br>Without holding current reduction  |
| Shock resistance  | Shock test with severity level 2 to FN 942017-5 and EN 60068-2-27                          |
| Corrosion resistance class CRC                            | 2 - Moderate corrosion stress  |
| LABS (PWIS) conformity                                    | VDMA24364-B1/B2-L  |
| Cleanroom suitability, measured according to ISO 14644-14 | Class 5 according to ISO 14644-1   |
| Media temperature   | -5 °C ... 60 °C  |
| Ambient temperature                                       | -5 °C ... 60 °C  |
| Product weight  | 55 g   |
| Electrical connection                                     | 3-pin<br>M8x1 A-encoded to EN 61076-2-104<br>Plug  |
| Type of mounting  | On manifold rail<br>With through-hole  |
| Pneumatic connection, port 1                              | M7   |
| Pneumatic connection, port 2                              | M7   |
| Pneumatic connection, port 3                              | M7   |
| Pneumatic connection, port 4                              | M7   |
| Pneumatic connection, port 5                              | M7   |
| Note on materials   | RoHS compliant   |
| Material seals  | HNBR<br>NBR  |
| Material housing  | Wrought aluminium alloy  |