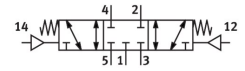


# Pneumatic valve VUWG-L14-P53C-G18

Part number: 573834

FESTO



[General operating condition](#)

## Data sheet

| Feature   | Value  |
|---|--|
| Valve function  | 5/3-way, closed  |
| Type of actuation   | Pneumatic  |
| Valve size  | 14 mm  |
| Standard nominal flow rate (standardised to DIN 1343)     | 650 l/min  |
| pneumatic working port                                    | G1/8   |
| Operating pressure  | -0.9 bar ... 10 bar  |
| Design  | Piston gate valve  |
| Type of reset   | Mechanical spring  |
| Grid dimension  | 16 mm  |
| Exhaust-air function                                      | Can be throttled   |
| Sealing principle   | Soft   |
| Mounting position   | Any  |
| Manual override   | None   |
| Type of piloting  | Direct   |
| Flow direction  | Reversible   |
| Symbol  | 00991018   |
| lap   | Overlap  |
| Pilot pressure  | 3 bar ... 10 bar   |
| Suitability for vacuum                                    | Yes  |
| Switching time off  | 30 ms  |
| Switching time on   | 8 ms   |
| Switching time reversal                                   | 16 ms  |
| Operating medium  | Compressed air to ISO 8573-1:2010 [7:4:4]  |
| Note on operating and pilot medium                        | Lubricated operation possible (in which case lubricated operation will always be required) |
| Corrosion resistance class CRC                            | 2 - Moderate corrosion stress  |
| LABS (PWIS) conformity                                    | VDMA24364-B1/B2-L  |
| Cleanroom suitability, measured according to ISO 14644-14 | Class 5 according to ISO 14644-1   |
| Media temperature   | -5 °C ... 50 °C  |
| Pilot medium  | Compressed air to ISO 8573-1:2010 [7:4:4]  |
| Ambient temperature                                       | -5 °C ... 60 °C  |
| Product weight  | 81 g   |
| Type of mounting  | On PR rail<br>With through-hole  |
| Pilot air port 12   | M5   |
| Pilot air port 14   | M5   |

| <b>Feature</b>               | <b>Value</b>   |
|------------------------------|----------------|
| Pneumatic connection, port 1 | G1/8           |
| Pneumatic connection, port 2 | G1/8           |
| Pneumatic connection, port 3 | G1/8           |
| Pneumatic connection, port 4 | G1/8           |
| Pneumatic connection, port 5 | G1/8           |
| Note on materials            | RoHS compliant |
| Material seals               | HNBR<br>NBR    |
| Material housing             | anodised       |