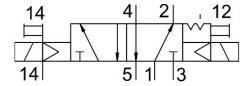
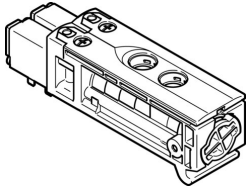


Solenoid valve

VUVB-ST12-B52-ZD-QX-D-1T1

Part number: 570911

FESTO



[PDF](#) General operating condition

Data sheet

Feature	Value
Valve function	5/2-way, double solenoid
Type of actuation	Electrical
Valve size	24 mm
Standard nominal flow rate (standardised to DIN 1343)	260 l/min ... 450 l/min
pneumatic working port	QS-4 QS-6
Operating pressure	0.28 MPa ... 0.8 MPa
Operating pressure	2.8 bar ... 8 bar
Design	Poppet valve with self-holding function
Degree of protection	IP65
Nominal size	4 mm
Exhaust-air function	Cannot be throttled
Sealing principle	Soft
Mounting position	Any
Manual override	Detenting Non-detenting
Type of piloting	Piloted
Pilot air supply	External
Flow direction	Non-reversible
Symbol	00995756
Note on operating pressure	0 - 0.8 MPa with ext. pilot air 0 - 8 bar with external pilot air
Pilot pressure	0.28 MPa ... 0.8 MPa
Pilot pressure	2.8 bar ... 8 bar
Switching time reversal	10 ms
Duty cycle	100%
Max. positive test pulse with 0 signal	800 µs
Max. negative test pulse with 1 signal	300 µs
Characteristic coil data	24 V DC: 1.0 W
Permissible voltage fluctuations	+/-10%
Operating medium	Compressed air to ISO 8573-1:2010 [7:4:4]
Note on operating and pilot medium	Lubricated operation possible (in which case lubricated operation will always be required)
Vibration resistance	Transport application test with severity level 1 to FN 942017-4 and EN 60068-2-6
Shock resistance	Shock test with severity level 1 to FN 942017-5 and EN 60068-2-27
Corrosion resistance class CRC	0 - No corrosion stress

Feature	Value
LABS (PWIS) conformity	VDMA24364-B1/B2-L
Media temperature	-5 °C ... 60 °C
Sound pressure level	85 dB(A)
Ambient temperature	-5 °C ... 60 °C
Product weight	57.4 g
Electrical connection	Via E-box
Type of mounting	On sub-base
Auxiliary pilot air port 14	Sub-base
Pneumatic connection, port 1	Sub-base
Pneumatic connection, port 3	Sub-base
Pneumatic connection, port 5	Sub-base
Note on materials	RoHS compliant
Material seals	NBR TPE-U(PU)
Material housing	Reinforced PA
Material piston slide	Wrought aluminium alloy