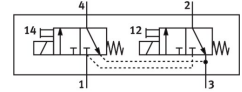


# Solenoid valve VOVC-BT-T32C-MT-F-1T1

Part number: 565450

FESTO



 [General operating condition](#)

## Data sheet

Feature	Value
Valve function	2x3/2 closed monostable
Type of actuation	Electrical
Valve size	10 mm
pneumatic working port	Sub-base
Operating voltage	24 V DC
Operating pressure	0 MPa ... 0.8 MPa
Operating pressure	0 bar ... 8 bar
Operating pressure	0 psi ... 116 psi
Design	Poppet valve with spring return
Type of reset	Mechanical spring
Degree of protection	IP40
Approval	c UL us - Recognised (Oil)
Nominal size	0.65 mm
Exhaust-air function	Cannot be throttled
Sealing principle	Soft
Mounting position	Any
Manual override	Detenting Non-detenting
Type of piloting	Direct
Flow direction	Non-reversible
Symbol	00992266
lap	Underlap
Signal status display	LED
b value	0.24
C value	0.048 l/sbar
Flow rate of valve	10 l/min
Flow rate of pneumatically interlinked valve	10 l/min
Switching time off	4.7 ms
Switching time on	5.2 ms
Max. positive test pulse with 0 signal	600 µs
Max. negative test pulse with 1 signal	800 µs
Characteristic coil data	24 V DC: low-current phase 0.3 W, high-current phase 1.0 W
Permissible voltage fluctuations	+/-10%
Operating medium	Compressed air to ISO 8573-1:2010 [7:4:4]
Note on operating and pilot medium	Lubricated operation possible (in which case lubricated operation will always be required)

<b>Feature</b>	<b>Value</b>
Corrosion resistance class CRC	1 - Low corrosion stress
LABS (PWIS) conformity	VDMA24364-B2-L
Media temperature	-5 °C ... 50 °C
Pilot medium	Compressed air to ISO 8573-1:2010 [7:4:4]
Ambient temperature	-5 °C ... 50 °C
Product weight	30 g
Electrical connection	Via E-box
Pneumatic connection, port 1	Sub-base
Pneumatic connection, port 2	Sub-base
Pneumatic connection, port 3	Sub-base
Pneumatic connection, port 4	Sub-base
Note on materials	RoHS compliant
Material seals	NBR PU
Material housing	Reinforced PA