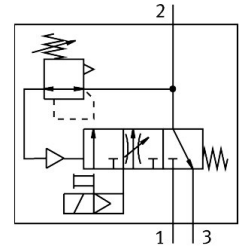


Soft start/quick exhaust valve MS9-SV

Part number: 562176

FESTO



General operating condition

Data sheet

Overall data sheet – Individual values depend upon your configuration.

| Feature | Value |
|---|---|
| Series | MS |
| Size | 9 |
| Grid dimension | 90 mm |
| Safety function | Exhaust |
| Performance Level (PL) | Exhausting/up to category 1, performance level c |
| Design | Piston gate valve |
| Type of actuation | Electrical |
| Sealing principle | Soft |
| Exhaust-air function | Cannot be throttled |
| Manual override | None On pilot solenoid valves: non-detenting; on soft-start/quick exhaust valve: detenting, self-resetting |
| Type of reset | Mechanical spring |
| Type of piloting | Piloted |
| Symbol | 00995240 |
| Valve function | 3/2-way, single solenoid, closed Soft-start function |
| Operating pressure | 0.35 MPa ... 1.6 MPa |
| Operating pressure | 3.5 bar ... 16 bar |
| Pressure gauge (ANALOG) or Pressure display (DIGITAL) | Prepared for G1/4 Prepared for G1/8 Red/green scale With pressure sensor With pressure gauge with gear indicator |
| Standard nominal flow rate (standardised to DIN 1343) | 8300 l/min ... 16550 l/min |
| Duty cycle | 100% |
| Characteristic coil data | 230 V AC: 50/60 Hz, pick-up power 14.5 VA, holding power 10.5 VA 24 V DC: 2.7 W 24 V DC: 8.4 W |
| Nominal operating voltage DC | 230 V |
| Permissible voltage fluctuations | +/-10% |
| Operating medium | Compressed air to ISO 8573-1:2010 [7:4:4] |
| Note on operating and pilot medium | Lubricated operation possible (in which case lubricated operation will always be required) |

| Feature | Value |
|---|--|
| Corrosion resistance class CRC | 2 - Moderate corrosion stress |
| Note on materials | RoHS compliant |
| LABS (PWIS) conformity | VDMA24364-B1/B2-L |
| Cleanroom suitability, measured according to ISO 14644-14 | Class 7 according to ISO 14644-1 |
| Degree of protection | IP65 |
| Media temperature | 0 °C ... 60 °C |
| Ambient temperature | 0 °C ... 60 °C |
| Storage temperature | 0 °C ... 60 °C |
| Shock resistance | Shock test with severity level 1 to FN 942017-5 and EN 60068-2-27 |
| Vibration resistance | Transport application test with severity level 1 to FN 942017-4 and EN 60068-2-6 |
| Approval | c UL us - Recognised (Oil) |
| CE mark (see declaration of conformity) | To EU EMC Directive To EC Machinery Directive In accordance with EU RoHS Directive |
| UKCA marking (see declaration of conformity) | To UK regulations for machines To UK RoHS instructions |
| Type of mounting | Either: Inline installation With accessories |
| Mounting position | Any |
| Pressure gauge connection | G1/8 G1/4 |
| Electrical connection | Type A Plug To EN 175301-803 Square design |
| Material housing | Die-cast aluminium |
| Material seals | NBR |
| Material piston slide | Brass |
| Material cover | Wrought aluminium alloy |
| Material underneath cover | Process automation |