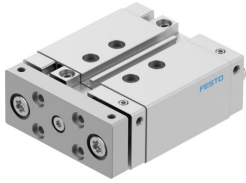


Guided drive DFM-20-25-B-PPV-A-KF

Part number: 559477

FESTO



 General operating condition

Data sheet

| Feature | Value |
|--|--|
| Stroke | 25 mm |
| Piston diameter | 20 mm |
| Operating mode, drive unit | Yoke |
| Cushioning | Pneumatic cushioning, adjustable at both ends |
| Mounting position | Any |
| Guide | Recirculating ball bearing guide |
| Design | Guidance |
| Position detection | Via proximity switch |
| Operating pressure | 0.2 MPa ... 1 MPa |
| Operating pressure | 2 bar ... 10 bar |
| Mode of operation | Double-acting |
| Operating medium | Compressed air to ISO 8573-1:2010 [7:4:4] |
| Note on operating and pilot medium | Lubricated operation possible (in which case lubricated operation will always be required) |
| Corrosion resistance class CRC | 0 - No corrosion stress |
| LABS (PWIS) conformity | VDMA24364-B1/B2-L |
| Cleanroom suitability, measured according to ISO 14644-14 | Class 6 according to ISO 14644-1 |
| Ambient temperature | -5 °C ... 60 °C |
| Impact energy in end positions | 0.2 J |
| Theoretical force at 0.6 MPa (6 bar, 87 psi), return stroke | 158 N |
| Theoretical force at 0.6 MPa (6 bar, 87 psi), advance stroke | 188 N |
| alternative connections | See product drawing |
| Pneumatic connection | M5 |
| Note on materials | RoHS compliant |
| Material cover | Wrought aluminium alloy |
| Material seals | NBR |
| Material housing | Wrought aluminium alloy |
| Material piston rod | High-alloy stainless steel |