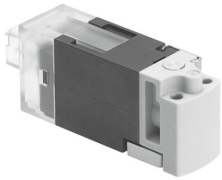


Solenoid valve

MHA1-M1LCH-2/2G-1.5-HC

Part number: 557864

FESTO



 [General operating condition](#)

Data sheet

Feature	Value
Valve function	2/2-way, single solenoid, closed
Type of actuation	Electrical
Construction width	10 mm
Standard nominal flow rate (standardised to DIN 1343)	30 l/min
pneumatic working port	Sub-base
Operating voltage	24 V DC
Operating pressure	0 bar ... 1.5 bar
Design	Poppet valve with spring return
Type of reset	Mechanical spring
Degree of protection	IP40
Approval	RCM
CE mark (see declaration of conformity)	To EU EMC Directive In accordance with EU RoHS Directive
UKCA marking (see declaration of conformity)	To UK RoHS instructions
Nominal size	1.5 mm
Grid dimension	10 mm
Exhaust-air function	Cannot be throttled
Sealing principle	Soft
Mounting position	Any
Manual override	Non-detenting
Type of piloting	Direct
Flow direction	Non-reversible
Symbol	00991398
Signal status display	LED
Operating pressure, reversible	-0.95 bar ... 0 bar
Suitability for vacuum	Yes
Standard flow rate (standardised to DIN 1343)	30 l/min
Max. switching frequency	10 Hz
Switching time off	6 ms
Switching time on	6 ms
Duty cycle	100%
Characteristic coil data	24 V DC: low-current phase 0.7 W, high-current phase 3.0 W
Permissible voltage fluctuations	+/-10%
Operating medium	Compressed air to ISO 8573-1:2010 [7:4:4]
Note on operating and pilot medium	Lubricated operation possible (in which case lubricated operation will always be required)

Feature	Value
Vibration resistance	Transport application test with severity level 2 to FN 942017-4 and EN 60068-2-6
Shock resistance	Shock test with severity level 2 to FN 942017-5 and EN 60068-2-27
Corrosion resistance class CRC	2 - Moderate corrosion stress
LABS (PWIS) conformity	VDMA24364-B2-L
Storage temperature	-20 °C ... 60 °C
Media temperature	-5 °C ... 50 °C
Ambient temperature	-5 °C ... 50 °C
Product weight	10 g
Max. cable length	30 M
Electrical connection	Plug KMH
Type of mounting	On sub-base
Pneumatic connection, port 1	Sub-base
Pneumatic connection, port 11	Sub-base
Pneumatic connection, port 2	Sub-base
Note on materials	RoHS compliant
Material seals	Fluoro rubber HNBR NBR
Material housing	Reinforced PPS
Material screws	Steel