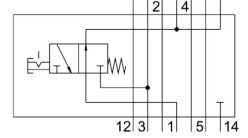
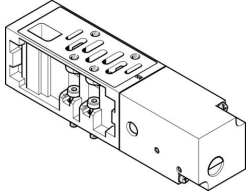


Vertical pressure shut-off plate VABF-S1-2-L1D1-C

FESTO

Part number: 555790



 [General operating condition](#)

Data sheet

Feature	Value
Construction width	54 mm
Based on standard	ISO 5599-1
Mounting position	Any
Vertical pneumatic linkage	Alternative compressed air supply for 1
Symbol	00991890
Operating pressure	-0.09 MPa ... 1 MPa
Operating pressure	-0.9 bar ... 10 bar
Inlet pressure 1	0.5 bar ... 10 bar
Inlet pressure 1	0.05 MPa ... 1 MPa
Inlet pressure 1	7.25 psi ... 145 psi
Standard nominal flow rate (standardised to DIN 1343)	1950 l/min
Operating medium	Compressed air to ISO 8573-1:2010 [7:4:4]
Note on operating and pilot medium	Lubricated operation possible (in which case lubricated operation will always be required)
Corrosion resistance class CRC	0 - No corrosion stress
LABS (PWIS) conformity	VDMA24364-B1/B2-L
Degree of protection	IP65 NEMA 4
Ambient temperature	-5 °C ... 50 °C
Product weight	1030 g
Mounting with vertical stacking	On manifold sub-base On individual sub-base
Note on materials	RoHS compliant
Material housing	Die-cast aluminium