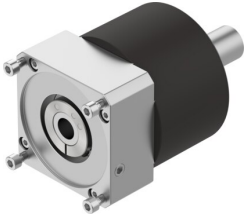


# Gear unit EMGA-160-P-G5-SAS-140

Part number: 552201

FESTO



 [General operating condition](#)

## Data sheet

| Feature                             | Value                  |
|-------------------------------------|------------------------|
| Gear unit flange size               | 160 mm                 |
| Motor flange size                   | 140 mm                 |
| Torsional backlash                  | 0.1 deg                |
| Type of gear unit                   | Planetary gear set     |
| Gear unit ratio                     | 5:1                    |
| Max. drive speed                    | 6500 rpm               |
| Operating temperature of gear unit  | -25 °C ... 90 °C       |
| LABS (PWIS) conformity              | VDMA24364-B2-L         |
| Degree of protection                | IP54                   |
| Continuous output torque            | 450 Nm                 |
| Mass moment of inertia of gear unit | 6.07 kgcm <sup>2</sup> |
| Max. output torque                  | 720 Nm                 |
| Max. efficiency                     | 98 %                   |
| Torsional rigidity                  | 38 Nm/arcmin           |
| Product weight                      | 18000 g                |
| Permissible axial shaft load        | 7000 N                 |
| Permissible radial shaft load       | 5000 N                 |
| Gear unit interface, output shaft   | 160G                   |
| Gear unit interface, drive shaft    | 140A                   |
| Note on materials                   | RoHS compliant         |