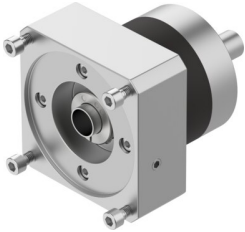


Gear unit EMGA-120-P-G3-SAS-140

Part number: 552198

FESTO



 [General operating condition](#)

Data sheet

| Feature | Value |
|-------------------------------------|------------------------|
| Gear unit flange size | 120 mm |
| Motor flange size | 140 mm |
| Torsional backlash | 0.12 deg |
| Type of gear unit | Planetary gear set |
| Gear unit ratio | 3:1 |
| Max. drive speed | 6500 rpm |
| Operating temperature of gear unit | -25 °C ... 90 °C |
| LABS (PWIS) conformity | VDMA24364-B2-L |
| Degree of protection | IP54 |
| Continuous output torque | 115 Nm |
| Mass moment of inertia of gear unit | 2.63 kgcm ² |
| Max. output torque | 184 Nm |
| Max. efficiency | 98 % |
| Torsional rigidity | 12 Nm/arcmin |
| Product weight | 6000 g |
| Gear unit interface, output shaft | 120G |
| Gear unit interface, drive shaft | 140A |
| Note on materials | RoHS compliant |