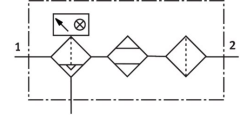


Adsorption dryer PDAD-73-G1/2

Part number: 552174

FESTO



General operating condition

Data sheet

| Feature | Value |
|--|--|
| Mounting position | Vertical Horizontal |
| Design | Cold regenerating adsorption dryer |
| Symbol | 00992135 |
| Inlet pressure 1 | 4 bar ... 16 bar |
| Power consumption at 24VDC | 9.6 W |
| Power consumption at 230 VAC | 16 VA |
| Pollution degree | 2 |
| KC mark | KC-EMV |
| CE mark (see declaration of conformity) | In accordance with EU Pressure Equipment Directive To EU EMC Directive To EU Low Voltage Directive |
| UKCA marking (see declaration of conformity) | To UK regulations for electrical equipment |
| Operating medium | Compressed air to ISO 8573-1:2010 [6:-4] |
| Note on operating and pilot medium | No water in liquid form |
| Pressure dew point | -40 °C |
| Pressure dewpoint with reduced cross-section | -70 °C |
| Corrosion resistance class CRC | 2 - Moderate corrosion stress |
| LABS (PWIS) conformity | VDMA24364-B1/B2-L |
| Storage temperature | -20 °C ... 60 °C |
| Air purity class at output | Compressed air to ISO 8573-1:2010 [2:1:2] at -70°C Compressed air to ISO 8573-1:2010 [2:2:2] at -40°C |
| Media temperature | 2 °C ... 50 °C |
| Degree of protection | IP65 |
| Protection class | II |
| Overvoltage category | II |
| Ambient temperature | 5 °C ... 50 °C |
| Product weight | 31000 g |
| Electrical connection 1, function | Power supply AC |
| Electrical connection 1, connection type | Socket |
| Electrical connection 1, connector system | Plug pattern type C to industry standard, 9.4 mm |
| Electrical connection 1, number of connections/cores | 3 |
| Electrical connection 1, used connections/cores | 2 |
| Electrical connection 2, function | Power supply DC |
| Electrical connection 2, connection type | Socket |
| Electrical connection 2, connector system | Plug pattern type C to industry standard, 9.4 mm |
| Electrical connection 2, number of connections/cores | 4 |

| Feature | Value |
|---|-------------------------|
| Electrical connection 2, used connections/cores | 2 |
| Type of mounting | With accessories |
| Pneumatic connection, port 1 | G1/2 |
| Pneumatic connection, port 2 | G1/2 |
| Note on materials | RoHS compliant |
| Material housing | Wrought aluminium alloy |