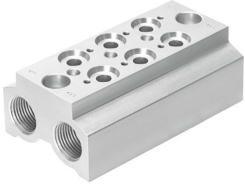


Manifold block CPE10-3/2-PRS-1/4-3

Part number: 550551

FESTO



 [General operating condition](#)

Data sheet

Feature	Value
Grid dimension	16 mm
Mounting position	Any
Max. number of valve positions	3
Max. number of pressure zones	2
Burst pressure	5 MPa
Burst pressure	50 bar
Burst pressure	725 psi
Operating pressure	-0.09 MPa ... 1 MPa
Operating pressure	-0.9 bar ... 10 bar
Corrosion resistance class CRC	2 - Moderate corrosion stress
LABS (PWIS) conformity	VDMA24364-B1/B2-L
Media temperature	-5 °C ... 50 °C
Ambient temperature	-5 °C ... 50 °C
Max. tightening torque for valve mounting	1.2 Nm
Product weight	164 g
Type of mounting in-line valve manifold	With through-hole
Mounting method for valve	With female thread
Pneumatic connection, port 1	G1/4
Pneumatic connection, port 3	G1/4
Pneumatic connection, port 5	G1/4
Note on materials	RoHS compliant
Material manifold rail	Wrought aluminium alloy