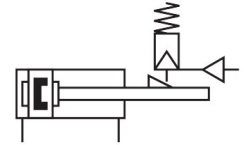


# Compact cylinder ADN-32- -KP-

Part number: 548208

FESTO



 General operating condition

## Data sheet

Overall data sheet – Individual values depend upon your configuration.

| Feature  | Value  |
|--|--|
| Stroke   | 10 mm ... 400 mm   |
| Piston diameter  | 32 mm  |
| Piston rod thread  | M10x1.25   |
| Based on standard  | ISO 21287  |
| Cushioning   | Elastic cushioning rings/plates at both ends   |
| Mounting position  | Any  |
| Type of clamping with direction of action                    | At both ends   |
| Piston-rod end   | Female thread  |
| Design   | Piston<br>Piston rod<br>Cylinder barrel  |
| Position detection   | Via proximity switch   |
| Symbol   | 00991260   |
| Variants   | Extended male piston rod thread<br>Custom thread on the piston rod<br>Extended piston rod<br>Laser etched rating plate |
| Operating pressure   | 0.15 MPa ... 1 MPa   |
| Operating pressure   | 1.5 bar ... 10 bar   |
| Mode of operation  | Double-acting  |
| Operating medium   | Compressed air to ISO 8573-1:2010 [7:4:4]  |
| Note on operating and pilot medium                           | Lubricated operation possible (in which case lubricated operation will always be required)                             |
| Corrosion resistance class CRC                               | 2 - Moderate corrosion stress  |
| LABS (PWIS) conformity                                       | VDMA24364-B1/B2-L  |
| Ambient temperature  | -10 °C ... 80 °C   |
| Impact energy in end positions                               | 0.4 J  |
| Theoretical force at 0.6 MPa (6 bar, 87 psi), return stroke  | 415 N  |
| Theoretical force at 0.6 MPa (6 bar, 87 psi), advance stroke | 483 N  |
| Moving mass for 0 mm stroke                                  | 100 g  |
| Additional moving mass per 10 mm stroke                      | 9 g  |
| Basic weight for 0 mm stroke                                 | 503 g  |
| Additional weight per 10 mm stroke                           | 29 g   |
| Type of mounting   | With female thread<br>With accessories   |
| Pneumatic connection   | G1/8   |

| <b>Feature</b>           | <b>Value</b>                               |
|--------------------------|--|
| Note on materials        | RoHS compliant                             |
| Material cover           | Wrought aluminium alloy<br>anodised        |
| Material piston rod      | High-alloy steel                           |
| Material cylinder barrel | Wrought aluminium alloy<br>Smooth-anodised |