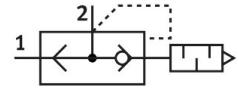


Quick exhaust valve VBQF-U-G14-E

Part number: 548001

FESTO



[PDF](#) General operating condition

Data sheet

Feature	Value
Valve function	Quick exhaust
Selection of additional functions	With silencer
Pneumatic connection, port 1	G1/4
Pneumatic connection, port 2	G1/4
Type of mounting	Screw-in
Standard nominal flow rate, exhaust 0.6-→0 MPa (6-→0 bar, 87-→0 psi)	2500 l/min
Standard nominal flow rate, air flow 0.6-→0,5 MPa (6-→5 bar, 87-→72.5 psi)	960 l/min
Operating pressure	0.5 bar ... 10 bar
Ambient temperature	-20 °C ... 80 °C
Material housing	Die-cast zinc
Operating medium	Compressed air to ISO 8573-1:2010 [7:4:4]
Nominal size	7 mm
Mounting position	Any
Symbol	00991460
Note on operating and pilot medium	Lubricated operation possible (in which case lubricated operation will always be required)
Corrosion resistance class CRC	1 - Low corrosion stress
LABS (PWIS) conformity	VDMA24364-B1/B2-L
Cleanroom suitability, measured according to ISO 14644-14	Class 4 according to ISO 14644-1
Media temperature	-20 °C ... 80 °C
Sound pressure level	75 dB(A)
Product weight	226 g
Note on materials	RoHS compliant
Material seals	NBR