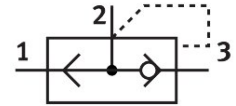


Quick exhaust valve VBQF-D-G18-E

Part number: 547533

FESTO



 General operating condition

Data sheet

Feature	Value
Valve function	Quick exhaust
Pneumatic connection, port 1	G1/8
Pneumatic connection, port 2	G1/8
Type of mounting	Screw-in
Standard nominal flow rate, exhaust 0.6-0.5 MPa (6-0.5 bar, 87-72.5 psi)	850 l/min
Standard nominal flow rate, exhaust 0.6-0 MPa (6-0 bar, 87-0 psi)	1300 l/min
Standard nominal flow rate, air flow 0.6-0.5 MPa (6-0.5 bar, 87-72.5 psi)	350 l/min
Operating pressure	0.5 bar ... 10 bar
Ambient temperature	-20 °C ... 80 °C
Material housing	Die-cast zinc
Operating medium	Compressed air to ISO 8573-1:2010 [7:4:4]
Nominal size	5 mm
Mounting position	Any
Symbol	00991459
Note on operating and pilot medium	Lubricated operation possible (in which case lubricated operation will always be required)
Corrosion resistance class CRC	1 - Low corrosion stress
LABS (PWIS) conformity	VDMA24364-B1/B2-L
Cleanroom suitability, measured according to ISO 14644-14	Class 4 according to ISO 14644-1
Media temperature	-20 °C ... 80 °C
Product weight	102.5 g
Pneumatic connection, port 3	G1/8
Note on materials	RoHS compliant
Material seals	NBR