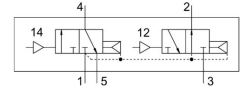


# Pneumatic valve VSPA-B-T32H-A2

Part number: 546723

FESTO



 General operating condition

## Data sheet

| Feature   | Value  |
|---|--|
| Valve function  | 2x3/2-way, open/closed, monostable   |
| Type of actuation                                     | Pneumatic  |
| Construction width                                    | 18 mm  |
| Standard nominal flow rate (standardised to DIN 1343) | 400 l/min  |
| pneumatic working port                                | Sub-base size 18 mm to ISO 15407-1<br>Sub-base size 02 to VDMA 24563<br>G1/8               |
| Operating pressure                                    | 2 bar ... 10 bar   |
| Design  | Piston gate valve  |
| Type of reset   | Pneumatic spring   |
| Nominal size  | 5 mm   |
| Exhaust-air function                                  | Can be throttled   |
| Sealing principle                                     | Soft   |
| Mounting position                                     | Any  |
| Conforms to standard                                  | ISO 15407-1<br>VDMA 24563  |
| Type of piloting                                      | Direct   |
| Flow direction  | Non-reversible   |
| Symbol  | 00991987   |
| lap   | Overlap  |
| Pilot pressure  | 2 bar ... 10 bar   |
| Flow rate of valve                                    | 600 l/min  |
| Flow rate of valve on individual sub-base             | 450 l/min  |
| Flow rate of pneumatically interlinked valve          | 400 l/min  |
| Switching time off                                    | 15 ms  |
| Switching time on                                     | 10 ms  |
| Explosion protection                                  | Zone 2 (ATEX)<br>Zone 22 (ATEX)  |
| Operating medium                                      | Compressed air to ISO 8573-1:2010 [7:4:4]  |
| Note on operating and pilot medium                    | Lubricated operation possible (in which case lubricated operation will always be required) |
| Corrosion resistance class CRC                        | 0 - No corrosion stress  |
| LABS (PWIS) conformity                                | VDMA24364-B1/B2-L  |
| Media temperature                                     | -10 °C ... 60 °C   |
| Relative air humidity                                 | 0 - 90%  |
| Pilot medium  | Compressed air to ISO 8573-1:2010 [7:4:4]  |
| Ambient temperature                                   | -10 °C ... 60 °C   |

| <b>Feature</b>                            | <b>Value</b>                       |
|---|------------------------------------|
| Max. tightening torque for valve mounting | 0.9 Nm ... 1.1 Nm                  |
| Product weight                            | 80 g                               |
| Pilot air port 12                         | Sub-base size 18 mm to ISO 15407-1 |
| Pilot air port 14                         | Sub-base size 18 mm to ISO 15407-1 |
| Pneumatic connection, port 1              | Sub-base size 18 mm to ISO 15407-1 |
| Pneumatic connection, port 2              | Sub-base size 18 mm to ISO 15407-1 |
| Pneumatic connection, port 3              | Sub-base size 18 mm to ISO 15407-1 |
| Pneumatic connection, port 4              | Sub-base size 18 mm to ISO 15407-1 |
| Pneumatic connection, port 5              | Sub-base size 18 mm to ISO 15407-1 |
| Note on materials                         | RoHS compliant                     |
| Material seals                            | NBR                                |
| Material housing                          | Die-cast aluminium                 |
| Material screws                           | Steel<br>Galvanised                |