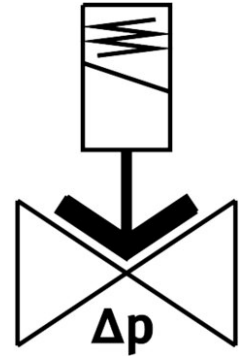
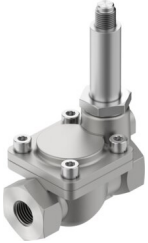



Solenoid valve VZWM-L-M22C-G12-F5-R1

Part number: 546164

FESTO



 General operating condition

Data sheet

| Feature | Value |
|--|---|
| Design | Diaphragm valve servo-controlled |
| Type of actuation | Electrical |
| Sealing principle | Soft |
| Mounting position | Preferably upright |
| Type of mounting | Inline installation |
| Connection Process valve | G1/2 |
| Electrical connection | Solenoid coil type MH-... , coil can be ordered as an accessory |
| Nominal size | 13 mm |
| Valve function | 2/2-way, single solenoid, closed |
| Flow direction | Non-reversible |
| Medium | Compressed air to ISO 8573-1:2010 [7:4:4] Inert gases Water Neutral fluids |
| Medium pressure, valve for liquid media | 0.05 MPa ... 0.6 MPa |
| Medium pressure, valve for liquid media | 0.5 bar ... 6 bar |
| Medium pressure, valve for liquid media | 7.25 psi ... 87 psi |
| Medium pressure, valve for gaseous media | 0.05 MPa ... 1 MPa |
| Medium pressure, valve for gaseous media | 0.5 bar ... 10 bar |
| Medium pressure, valve for gaseous media | 7.25 psi ... 145 psi |
| Burst pressure | 4 MPa |
| Burst pressure | 40 bar |
| Burst pressure | 580 psi |
| Overload pressure | 4 MPa |
| Overload pressure | 40 bar |
| Overload pressure | 580 psi |
| Pressure difference | 0.05 MPa |
| Pressure difference | 0.5 bar |
| Pressure difference | 7.25 psi |

| Feature | Value |
|---|---------------------------|
| Type of piloting | Piloted |
| Symbol | 00995681 |
| Max. viscosity | 22 mm ² /s |
| Media temperature | -10 °C ... 60 °C |
| Media temperature for fluids | 5 °C ... 50 °C |
| Ambient temperature | -10 °C ... 60 °C |
| Flow rate Kv | 2.4 m ³ /h |
| Standard nominal flow rate (standardised to DIN 1343) | 2400 l/min |
| Switching time on | 8 ms |
| Switch-on time for fluids | 110 ms |
| Switching time off | 10 ms |
| Switch-off time for fluids | 200 ms |
| b value | 0.37 |
| C value | 9.8 l/sbar |
| Note on materials | RoHS compliant |
| LABS (PWIS) conformity | VDMA24364 zone III |
| Material housing | Cast stainless steel |
| Material number housing | 1,4581 |
| Material seals | NBR |
| Material plunger tube | High-alloy steel |
| Product weight | 360 g |
| Corrosion resistance class CRC | 3 - high corrosion stress |
| Max. tightening torque for cover screw | 20 Nm |
| Max. tightening torque for connecting thread | 105 Nm |
| Max. tightening torque for coil fastening | 2 Nm |