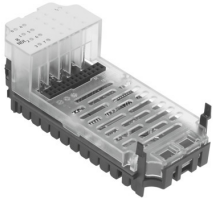


# Input module CPX-8NDE

Part number: 543813

FESTO



 General operating condition

## Data sheet

| Feature  | Value  |
|--|--|
| Dimensions (W x L x H)                             | 50 mm x 107 mm x 50 mm   |
| Product weight                                     | 40 g   |
| Ambient temperature                                | -5 °C ... 50 °C  |
| Storage temperature                                | -20 °C ... 70 °C   |
| Degree of protection                               | Depending on the connection block  |
| Corrosion resistance class CRC                     | (installed)  |
| LABS (PWIS) conformity                             | VDMA24364-B2-L   |
| Material housing                                   | Makrolon®  |
| LED display  | 1 Group diagnostics<br>8 Channel status  |
| Diagnosis  | Short circuit/overload per channel   |
| Parameterisation                                   | Input debounce time<br>Signal extension time<br>Behaviour after short circuit<br>Module monitoring |
| Operational voltage range DC                       | 18 V ... 30 V  |
| Nominal operating voltage DC                       | 24 V   |
| Intern power consumption nominal operating voltage | Typ. 15 mA   |
| Number of inputs                                   | 8  |
| Characteristic for inputs                          | IEC 1131-T2  |
| Switching level                                    | Signal 0: $\geq 11$ V<br>Signal 1: $\leq 5$ V  |
| Switching logic for inputs                         | NPN (negative switching)   |
| Input debounce time                                | 3 ms (0.1 ms, 10 ms, 20 ms, parameterisable)   |
| Max. residual current of inputs per module         | 0.7 A  |
| Isolation channel - channel                        | No   |
| Isolation channel - internal bus                   | No   |
| Fuse protection (short circuit)                    | Internal electronic fuse per module  |