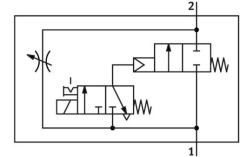


Soft-start valve MS12-DE-G-V24

Part number: 541498

FESTO



 General operating condition

Data sheet

| Feature | Value |
|---|---|
| Exhaust-air function | Can be throttled |
| Type of actuation | Electrical |
| Mounting position | Any |
| Manual override | Detenting Non-detenting |
| Design | Piston seat |
| Type of reset | Mechanical spring |
| Type of piloting | Piloted |
| Pilot air supply | Internal |
| Flow direction | Non-reversible |
| Symbol | 00991501 |
| Valve function | 2/2 |
| Switching position indicator | With accessories |
| Operating pressure | 3 bar ... 16 bar |
| Standard nominal flow rate (standardised to DIN 1343) | 25000 l/min ... 42000 l/min |
| Duty cycle | 100% |
| Characteristic coil data | 24 V DC: 8.4 W 42 V AC: 50 Hz, pick-up power 14.0 VA, holding power 10.0 VA 42 V AC: 60 Hz, pick-up power 12.0 VA, holding power 7.0 VA |
| Operating medium | Compressed air to ISO 8573-1:2010 [-:-:-] |
| Corrosion resistance class CRC | 2 - Moderate corrosion stress |
| LABS (PWIS) conformity | VDMA24364-B1/B2-L |
| Media temperature | -10 °C ... 50 °C |
| Degree of protection | IP65 |
| Ambient temperature | -10 °C ... 50 °C |
| Product weight | 3800 g |
| Electrical connection | To DIN EN 175301-803 Square design |
| Signal status display | With accessories |
| Type of mounting | With accessories |
| Pneumatic connection, port 1 | Manifold module |
| Pneumatic connection, port 2 | Manifold module |
| Material seals | NBR |
| Material housing | Die-cast aluminium |