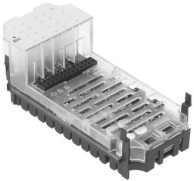


# Analogue module CPX-4AE-I

Part number: 541484

FESTO



 General operating condition

## Data sheet

Feature	Value
Dimensions (W x L x H)	50 mm x 107 mm x 50 mm
Product weight	47 g
Ambient temperature	-5 °C ... 50 °C
Storage temperature	-20 °C ... 70 °C
Degree of protection	Depending on the connection block
Corrosion resistance class CRC	(installed)
Max. cable length	30 M Shielded
LABS (PWIS) conformity	VDMA24364-B2-L
Material housing	Makrolon®
LED display	1 Group diagnostics
Diagnosis	Wire break per channel Limit value violation per channel Short circuit input signal Parameterisation error
Parameterisation	Data format Forcing per channel Limit monitoring per channel Measured value smoothing Signal range per channel Behaviour after short circuit Wire break monitoring per channel
Internal cycle time	10 ms
Operational voltage range DC	18 V ... 30 V
Nominal operating voltage DC	24 V
Intern power consumption nominal operating voltage	Typ. 50 mA
Number of inputs	4
Data format	12 bits + prefix Scalable to 15 bits
Repetition accuracy	0.15% at 25°C
Basic error limit at 25 °C	±0.5 %
Operating error limit related to the ambient temperature range	±0.6 %
Sensor type	0 - 20 mA 4 - 20 mA
Isolation channel - channel	No
Isolation channel - internal bus	Yes, without using the internal sensor supply
Fuse protection (short circuit)	Internal electronic fuse