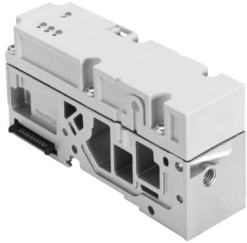


Pressure sensor VMPA-FB-PS-P1

Part number: 541087

FESTO



[PDF General operating condition](#)

Data sheet

| Feature | Value |
|----------------------------------------------|-------------------------------------------------------------|
| Symbol | 00992805 |
| Approval | c UL us - Recognised (Oil) |
| CE mark (see declaration of conformity) | To EU EMC Directive In accordance with EU RoHS Directive |
| UKCA marking (see declaration of conformity) | To UK RoHS instructions |
| Note on materials | RoHS compliant |
| Measured variable | Relative pressure |
| Measurement method | Piezoresistive pressure sensor with display |
| Pressure measuring range | 0 MPa ... 1 MPa |
| Pressure measuring range | 0 bar ... 10 bar |
| Pressure measuring range | 0 psi ... 145 psi |
| Start value for pressure measuring range | 0 MPa |
| Start value for pressure measuring range | 0 bar |
| Start value for pressure measuring range | 0 psi |
| End value for pressure measuring range | 1 MPa |
| End value for pressure measuring range | 10 bar |
| End value for pressure measuring range | 145 psi |
| Media temperature | -5 °C ... 50 °C |
| Ambient temperature | -5 °C ... 50 °C |
| Pressure resolution | 0.001 bar |
| Accuracy in ± % FS | 2.5 %FS |
| Operational voltage range DC | 18 V ... 30 V |
| Nominal operating voltage DC | 24 V |
| Permissible voltage fluctuations | +/-25% |
| Reverse polarity protection | For operating voltage |
| Electrical connection | Via E-box |
| Mounting position | Any |
| Pneumatic connection | M7 |
| Product weight | 200 g |
| Material housing | Die-cast aluminium PA-GF |
| Display type | LED |
| Displayable units | kPa mbar psi |
| Switching status indication | LED |

| Feature | Value |
|--------------------------------|--------------------------|
| Setting range threshold value | 0 % ... 100 % |
| Setting range threshold value | 0 bar ... 10 bar |
| Setting range hysteresis | 0 % ... 100 % |
| Setting range hysteresis | 0 bar ... 10 bar |
| Degree of protection | IP65 |
| Corrosion resistance class CRC | 1 - Low corrosion stress |
| LABS (PWIS) conformity | VDMA24364-B1/B2-L |