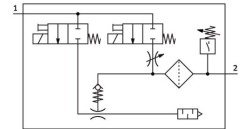


Vacuum generator OVEM-07-H-B-GO-CE-N-2P

Part number: 540015

FESTO



Data sheet

[General operating condition](#)

| Feature | Value |
|-------------------------------|---------------------------------------------------------------------------------------------------------------------------------------------------------------------|
| Nominal size, Laval nozzle | 0.7 mm |
| Grid dimension | 20 mm |
| Silencer design | Open |
| Mounting position | Any |
| Ejector characteristic | High vacuum Standard |
| Grade of filtration | 40 µm |
| Manual override | Non-detenting Additionally via operating buttons |
| Integrated function | Ejector pulse valve, electric Flow control On/off valve, electric Filter Air-saving function, electric Check valve Open silencer Vacuum switch |
| Design | Modular |
| Short circuit current rating | Yes |
| Measured variable | Relative pressure |
| Measuring principle | Piezoresistive |
| Switching element function | N/C contact N/O contact |
| Switching function | Window comparator Threshold value comparator |
| Symbol | 00992094 |
| Valve function | Closed |
| Reverse polarity protection | For all electrical connections |
| Standard switching input | IEC 61131-2 |
| Display type | 4-place alphanumeric Back-lit LCD |
| Indicating range | -0.999 bar ... 0 bar |
| Displayable units | bar |
| Setting range hysteresis | -0.9 bar ... 0 bar |
| Setting options | Via display and buttons |
| Switching position indicator | LCD |
| Switching status indication | Optical |
| Setting range threshold value | -0.999 bar ... 0 bar |
| Operating pressure | 2 bar ... 8 bar |

| Feature | Value |
|----------------------------------------------------|-------------------------------------------------------------|
| Operating pressure for max. vacuum | 4.1 bar |
| Max. vacuum | 93 % |
| Nominal operating pressure | 6 bar |
| Max. suction flow rate against atmosphere | 16 l/min |
| Air supply time at nominal operating pressure | 0.4 s |
| Operational voltage range DC | 20.4 V ... 27.6 V |
| Duty cycle | 100% |
| Inductive protective circuit | Adapted to MZ, MY, ME coils |
| Insulation voltage | 50 V |
| No-load supply current | <70 mA |
| Max. output current | 100 mA |
| Off-state current | 0.1 mA |
| Switching output | 2xPNP |
| Voltage drop | ≤1.5 V |
| Characteristic coil data | 24 V DC: low-current phase 0.3 W, high-current phase 2.55 W |
| Immunity to surge | 0.8 kV |
| Overload protection | Available |
| Pollution degree | 3 |
| Approval | RCM c UL us - Listed (Oil) |
| KC mark | KC-EMV |
| CE mark (see declaration of conformity) | To EU EMC Directive |
| UKCA marking (see declaration of conformity) | To UK instructions for EMC |
| Operating medium | Compressed air to ISO 8573-1:2010 [7:4:4] |
| Note on operating and pilot medium | Lubricated operation not possible |
| Corrosion resistance class CRC | 2 - Moderate corrosion stress |
| LABS (PWIS) conformity | VDMA24364 zone III |
| Media temperature | 0 °C ... 50 °C |
| Relative air humidity | 5 - 85% |
| Sound pressure level at nominal operating pressure | 58 dB(A) |
| Degree of protection | IP65 |
| Protection class | III |
| Ambient temperature | 0 °C ... 50 °C |
| Max. tightening torque | 0.8 Nm with female thread 2.5 Nm with through-hole |
| Product weight | 335 g |
| Pressure measuring range | -1 bar ... 0 bar |
| Accuracy in ± % FS | 3 %FS |
| Reproducibility of switching values FS | 0.6 % |
| Switching logic for inputs | PNP (positive switching) |
| Electrical connection | M12x1 Plug |
| Type of mounting | With through-hole With female thread With accessories |
| Pneumatic connection, port 1 | G1/4 |
| Pneumatic connection, port 3 | Integrated silencer |
| Vacuum connection | G1/4 |
| Note on materials | RoHS compliant |
| Material seals | NBR |
| Material receiver nozzle | POM |
| Material filter | Fabric Process automation Sintered steel |
| Material filter housing | Reinforced PA |

| Feature | Value |
|-----------------------------|----------------------------------------------|
| Material housing | Die-cast aluminium Reinforced PA |
| Material adjusting screw | Steel |
| Material silencer | Wrought aluminium alloy Polyurethane foam |
| Material screws | Steel |
| Material screen | Process automation |
| Material connector housing | Brass, nickel-plated |
| Material electrical contact | Gold-plated brass |
| Material pins | Steel |
| Material transmitter nozzle | Wrought aluminium alloy |
| Material keypad | TPE-U |
| Material fitting | Anodised wrought aluminium alloy |