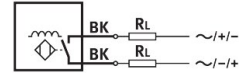
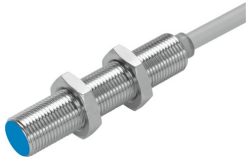



Proximity sensor SIED-M12B-ZS-K-L

Part number: 538272

FESTO



 [General operating condition](#)

Data sheet

Feature	Value
Design	Round
Conforms to standard	EN 60947-5-2
Symbol	00991712
Approval	RCM c UL us - Listed (Oil)
CE mark (see declaration of conformity)	To EU EMC Directive To EU Low Voltage Directive
UKCA marking (see declaration of conformity)	To UK regulations for electrical equipment
Measuring principle	Inductive
Rated operating distance	2 mm
Assured operating distance	1.62 mm
Reduction factors	Aluminium = 0.5 Stainless steel St 18/8 = 0.9 Copper = 0.4 Brass = 0.6 Steel St 37 = 1.0
Ambient temperature	-25 °C ... 85 °C
Repetition accuracy	0.1 mm
Switching output	Contactless, 2-wire
Switching element function	N/O contact
Hysteresis	0.02 mm ... 0.44 mm
Max. switching frequency DC	1200 Hz
Max. switching frequency AC	25 Hz
Max. output current	200 mA
Voltage drop	≤8 V
Min. load current	5 mA
Short circuit current rating	No
Operational voltage range AC	20 V ... 265 V
Operational voltage range DC	20 V ... 320 V
Mains frequency	50 Hz
No-load supply current	≤1.5 mA
Reverse polarity protection	For all electrical connections
Electrical connection	Cable
Cable length	2.5 m
Material cable sheath	TPE-U(PUR)
Material insulating sheath	PVC
Size	M12

Feature	Value
Type of mounting	Via lock nut
Tightening torque	10 Nm
Mounting type	Flush
Product weight	90 g
Material housing	nickel-plated
Switching status indication	Yellow LED
Ambient temperature with moving cable	-5 °C ... 50 °C
Degree of protection	IP67
Corrosion resistance class CRC	1 - Low corrosion stress
LABS (PWIS) conformity	VDMA24364-B2-L
Additional information for sensor selection	For DC and AC voltage
Electrical output	Contactless, 2-wire
Selection of sensor design	Standard