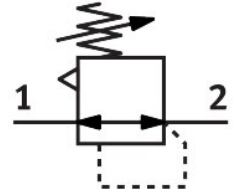


Precision pressure regulator MS6-LRP-1/2-D5-A8

Part number: 538024

FESTO



General operating condition

Data sheet

Feature	Value
Size	6
Series	MS
Actuator lock	Rotary knob with detent
Mounting position	Any
Design	Piloted precision diaphragm control valve
Controller function	Output pressure constant With secondary exhausting
Symbol	00991540
Pressure gauge (ANALOG) or Pressure display (DIGITAL)	Prepared for G1/8
Operating pressure	0.1 MPa ... 1.4 MPa
Operating pressure	1 bar ... 14 bar
Pressure regulation range	0.1 bar ... 4 bar
Max. pressure hysteresis	0.02 bar
Flow rate of secondary exhaust	≥650 l/min
Standard nominal flow rate (standardised to DIN 1343)	≥3000 l/min
Operating medium	Compressed air to ISO 8573-1:2010 [7:4:4] Inert gas
Note on operating and pilot medium	Ester oil < 0.1mg/m ³ , according to ISO 8573-1:2010 [-:~:2] Lubricated operation not possible
Corrosion resistance class CRC	2 - Moderate corrosion stress
LABS (PWIS) conformity	VDMA24364-B1/B2-L
Storage temperature	-10 °C ... 60 °C
Media temperature	-10 °C ... 60 °C
Ambient temperature	-10 °C ... 60 °C
Product weight	850 g
Type of mounting	With accessories
Pneumatic connection, port 1	G1/2
Pneumatic connection, port 2	G1/2
Pneumatic connection, port 3	G1/4
Note on materials	RoHS compliant
Material seals	NBR
Material housing	Aluminium