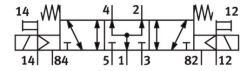


Solenoid valve MFH-5/3B-1/4-S-B-EX

Part number: 535952

FESTO



[General operating condition](#)

Data sheet

| Feature | Value |
|---|---|
| Valve function | 5/3-way, pressurised |
| Type of actuation | Electrical |
| Construction width | 32 mm |
| Standard nominal flow rate (standardised to DIN 1343) | 1600 l/min |
| pneumatic working port | G1/4 |
| Operating voltage | 24 V DC |
| Operating pressure | -0.09 MPa ... 1 MPa |
| Operating pressure | -0.9 bar ... 10 bar |
| Design | Piston gate valve |
| Type of reset | Mechanical spring |
| CE mark (see declaration of conformity) | To EU Explosion Protection Directive (ATEX) |
| Explosion protection certification outside the EU | EPL Db (GB) EPL Gb (GB) |
| UKCA marking (see declaration of conformity) | To UK EX instructions |
| ATEX category gas | II 2G |
| ATEX category dust | II 2D |
| Explosion ignition protection type for gas | Ex h IIC T4 Gb |
| Explosion ignition protection type for dust | Ex h IIIC T130°C Db |
| Explosion ambient temperature | -5°C ≤ Ta ≤ +40°C |
| Degree of protection | IP65 |
| Nominal size | 10 mm |
| Grid dimension | 33 mm |
| Exhaust-air function | Can be throttled |
| Sealing principle | Soft |
| Mounting position | Any |
| Manual override | Non-detenting |
| Type of piloting | Piloted |
| Pilot air supply | External |
| Flow direction | Reversible |
| Symbol | 00991031 |
| lap | Overlap |
| Pilot pressure | 0.3 MPa ... 1 MPa |
| Pilot pressure | 3 bar ... 10 bar |
| b value | 0.38 |
| C value | 6.35 l/sbar |
| Max. switching frequency | 3 Hz |

| Feature | Value |
|--|---|
| Switching time off | 23 ms |
| Switching time on | 22 ms |
| Switching time reversal | 35 ms |
| Max. positive test pulse with 0 signal | 2200 µs |
| Max. negative test pulse with 1 signal | 3700 µs |
| Explosion protection | Zone 1 (ATEX) Zone 1 (UKEX) Zone 2 (ATEX) Zone 21 (ATEX) Zone 21 (UKEX) Zone 22 (ATEX) |
| Operating medium | Compressed air to ISO 8573-1:2010 [7:4:4] |
| Note on operating and pilot medium | Lubricated operation possible (in which case lubricated operation will always be required) |
| Corrosion resistance class CRC | 1 - Low corrosion stress |
| LABS (PWIS) conformity | VDMA24364-B1/B2-L |
| Storage temperature | -40 °C ... 60 °C |
| Media temperature | -10 °C ... 60 °C |
| Pilot medium | Compressed air to ISO 8573-1:2010 [7:4:4] |
| Ambient temperature | -5 °C ... 40 °C |
| Product weight | 500 g |
| Electrical connection | Via F coil, to be ordered separately |
| Type of mounting | With through-hole |
| Pilot exhaust port 82 | M5 |
| Pilot exhaust port 84 | M5 |
| Pilot air port 12 | G1/8 |
| Pilot air port 14 | G1/8 |
| Pneumatic connection, port 1 | G1/4 |
| Pneumatic connection, port 2 | G1/4 |
| Pneumatic connection, port 3 | G1/4 |
| Pneumatic connection, port 4 | G1/4 |
| Pneumatic connection, port 5 | G1/4 |
| Note on materials | RoHS compliant |
| Material seals | NBR |
| Material housing | Die-cast aluminium |