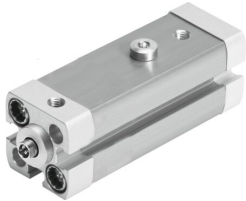


Linear/swivel clamp CLR-25-20-R-P-A-K11-R8

Part number: 535485

FESTO



 [General operating condition](#)

Data sheet

Feature	Value
Total stroke	33 mm
Piston diameter	25 mm
Piston rod thread	M6
Swivel angle	90 deg +/-3 deg
Clamping stroke	20 mm
Cushioning	Elastic cushioning rings/plates at both ends
Mounting position	Any
Design	Piston Piston rod Cylinder barrel
Position detection	Via proximity switch
Swivel direction	right
Symbol	00991217
Variants	Weld spatter protection Dust protection
Operating pressure	2 bar ... 10 bar
Mode of operation	Double-acting
Operating medium	Compressed air to ISO 8573-1:2010 [7:4:4]
Note on operating and pilot medium	Lubricated operation possible (in which case lubricated operation will always be required)
Corrosion resistance class CRC	2 - Moderate corrosion stress
LABS (PWIS) conformity	VDMA24364-B2-L
Ambient temperature	-10 °C ... 80 °C
Effective clamping force at 0.2 MPa (2 bar, 29 psi)	63 N
Effective clamping force at 0.4 MPa (4 bar, 58 psi)	127 N
Effective clamping force at 0.6 MPa (6 bar, 87 psi)	188 N
Max. tightening torque Clamping finger screw	12 Nm
Theoretical clamping force at 0.6 MPa (6 bar, 87 psi)	227 N
Product weight	470 g
Type of mounting	With through-hole With female thread With accessories
Pneumatic connection	M5
Material wiper	PPS
Material collar screws	Steel Galvanised
Material cover	Wrought aluminium alloy coated

Feature	Value
Material seals	NBR TPE-U(PU)
Material housing	Smooth-anodised
Material piston rod	coated High-alloy stainless steel
Material cylinder barrel	Wrought aluminium alloy Smooth-anodised