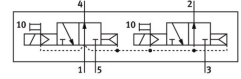


Solenoid valve VSVA-B-T32U-AH-A1-1R2L

Part number: 534533

FESTO



 General operating condition

Data sheet

| Feature | Value |
|---|---|
| Valve function | 2x3/2 open monostable |
| Type of actuation | Electrical |
| Construction width | 26 mm |
| Standard nominal flow rate (standardised to DIN 1343) | 900 l/min |
| pneumatic working port | Sub-base size 26 mm to ISO 15407-1 |
| Operating voltage | 24 V DC |
| Operating pressure | 0.3 MPa ... 0.8 MPa |
| Operating pressure | 3 bar ... 8 bar |
| Design | Piston gate valve |
| Type of reset | Pneumatic spring |
| Approval | RCM c UL us - Recognised (Oil) |
| CE mark (see declaration of conformity) | To EU EMC Directive |
| UKCA marking (see declaration of conformity) | To UK RoHS instructions |
| Degree of protection | IP65 NEMA 4 |
| Nominal size | 9 mm |
| Grid dimension | 27 mm |
| Exhaust-air function | Can be throttled Via throttle plate Via individual sub-base |
| Sealing principle | Soft |
| Mounting position | Any |
| Conforms to standard | ISO 15407-1 |
| Manual override | Non-detenting |
| Type of piloting | Piloted |
| Pilot air supply | Internal |
| Flow direction | Non-reversible |
| Symbol | 00991807 |
| lap | Overlap |
| Reverse polarity protection | For all electrical connections |
| Additional functions | Safety shut-off |
| Signal status display | LED |
| Flow rate of valve | 1250 l/min |
| Flow rate of valve on individual sub-base | 1000 l/min |
| Flow rate of pneumatically interlinked valve | 900 l/min |
| Switching time off | 33 ms |

| Feature | Value |
|--|--|
| Switching time on | 20 ms |
| Duty cycle | 100% |
| Max. positive test pulse with 0 signal | 400 µs |
| Max. negative test pulse with 1 signal | 100 µs |
| Nominal pick-up current per solenoid coil | 110 mA to 20 ms |
| Nominal current with current reduction | 30 mA after 20 ms |
| Characteristic coil data | 24 V DC: low-current phase 1.0 W, high-current phase 2.4 W |
| Permissible voltage fluctuations | +/-10% |
| Operating medium | Compressed air to ISO 8573-1:2010 [7:4:4] |
| Note on operating and pilot medium | Lubricated operation possible (in which case lubricated operation will always be required) |
| Vibration resistance | Transport application test with severity level 2 to FN 942017-4 and EN 60068-2-6 |
| Shock resistance | Shock test with severity level 2 to FN 942017-5 and EN 60068-2-27 |
| Corrosion resistance class CRC | 2 - Moderate corrosion stress |
| LABS (PWIS) conformity | VDMA24364-B1/B2-L |
| Media temperature | -5 °C ... 50 °C |
| Relative air humidity | 0 - 90% |
| Protection against direct and indirect contact | PELV |
| Pilot medium | Compressed air to ISO 8573-1:2010 [7:4:4] |
| Ambient temperature | -5 °C ... 50 °C |
| Max. tightening torque for valve mounting | 1.8 Nm ... 2.2 Nm |
| Product weight | 270 g |
| Electrical connection | 4-pin M8x1 Central plug Round design |
| Type of mounting | On sub-base Via through-hole and screw |
| Note on materials | RoHS compliant |
| Material seals | Fluoro rubber HNBR NBR |
| Material housing | Die-cast aluminium |