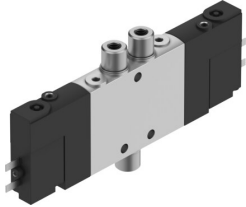


# Solenoid valve CPE10-M1BH-5/3B-M5-B

Part number: 533163

FESTO



[General operating condition](#)

## Data sheet

| Feature   | Value  |
|---|--|
| Valve function  | 5/3-way, pressurised                               |
| Type of actuation                                     | Electrical   |
| Construction width                                    | 10 mm  |
| Standard nominal flow rate (standardised to DIN 1343) | 180 l/min  |
| pneumatic working port                                | M5   |
| Operating voltage                                     | 24 V DC  |
| Operating pressure                                    | 0.3 MPa ... 0.8 MPa                                |
| Operating pressure                                    | 3 bar ... 8 bar                                    |
| Design  | Piston gate valve                                  |
| Type of reset   | Mechanical spring                                  |
| Approval  | c UL us - Recognised (Oil)                         |
| Maritime classification                               | See certificate                                    |
| Certificate issuing authority                         | DNV-TAA000032X<br>UL MH19482                       |
| Degree of protection                                  | IP65<br>With plug socket<br>To IEC 60529           |
| Nominal size  | 4 mm   |
| Exhaust-air function                                  | Can be throttled                                   |
| Sealing principle                                     | Soft   |
| Mounting position                                     | Any  |
| Manual override                                       | Detenting via accessory<br>Non-detenting           |
| Type of piloting                                      | Piloted  |
| Pilot air supply                                      | Internal   |
| Flow direction  | Non-reversible                                     |
| Symbol  | 00991034   |
| Valve position code                                   | Label holder                                       |
| lap   | Overlap  |
| Switching time off                                    | 20 ms  |
| Switching time on                                     | 16 ms  |
| Duty cycle  | 100% in conjunction with holding current reduction |
| Max. positive test pulse with 0 signal                | 1200 µs  |
| Max. negative test pulse with 1 signal                | 900 µs   |
| Characteristic coil data                              | 24 V DC: 1.28 W                                    |
| Permissible voltage fluctuations                      | -15% / +10%  |
| Operating medium                                      | Compressed air to ISO 8573-1:2010 [7:4:4]          |

| <b>Feature</b>                     | <b>Value</b>   |
|------------------------------------|--|
| Note on operating and pilot medium | Lubricated operation possible (in which case lubricated operation will always be required) |
| Vibration resistance               | Transport application test with severity level 2 to FN 942017-4 and EN 60068-2-6           |
| Shock resistance                   | Shock test with severity level 2 to FN 942017-5 and EN 60068-2-27                          |
| Corrosion resistance class CRC     | 2 - Moderate corrosion stress  |
| LABS (PWIS) conformity             | VDMA24364-B1/B2-L  |
| Media temperature                  | -5 °C ... 50 °C  |
| Ambient temperature                | -5 °C ... 50 °C  |
| Electrical connection              | 2-pin  |
| Type of mounting                   | With through-hole  |
| Pilot exhaust port 82              | M3   |
| Pilot exhaust port 84              | M3   |
| Pilot air port 12                  | M3   |
| Pilot air port 14                  | M3   |
| Pneumatic connection, port 1       | M5   |
| Pneumatic connection, port 2       | M5   |
| Pneumatic connection, port 3       | M7   |
| Pneumatic connection, port 4       | M5   |
| Pneumatic connection, port 5       | M7   |
| Note on materials                  | RoHS compliant   |
| Material seals                     | NBR  |
| Material housing                   | Die-cast aluminium   |