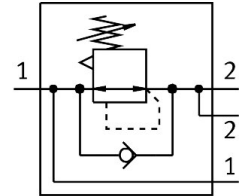


# Pressure regulator MS6-LRB-1/2-D5-A4-AS

Part number: 530320

FESTO



 General operating condition

## Data sheet

| Feature   | Value   |
|---|---|
| Size  | 6   |
| Series  | MS  |
| Actuator lock   | Rotary knob with detent<br>can be closed with accessories                                     |
| Mounting position                                     | Any   |
| Design  | Directly actuated diaphragm regulator<br>With through compressed air supply                   |
| Controller function                                   | Output pressure constant<br>With primary pressure compensation<br>With secondary exhausting   |
| Symbol  | 00995310  |
| Pressure gauge (ANALOG) or Pressure display (DIGITAL) | Prepared for G1/4   |
| Operating pressure                                    | 0.8 bar ... 20 bar  |
| Pressure regulation range                             | 0.3 bar ... 4 bar   |
| Max. pressure hysteresis                              | 0.25 bar  |
| Standard nominal flow rate (standardised to DIN 1343) | 7300 l/min  |
| Operating medium                                      | Compressed air to ISO 8573-1:2010 [7:4:4]<br>Inert gas  |
| Note on operating and pilot medium                    | Lubricated operation possible (in which case lubricated operation will<br>always be required) |
| Corrosion resistance class CRC                        | 2 - Moderate corrosion stress   |
| LABS (PWIS) conformity                                | VDMA24364-B1/B2-L   |
| Storage temperature                                   | -10 °C ... 60 °C  |
| Suitable for use with food                            | See supplementary material information  |
| Media temperature                                     | -10 °C ... 60 °C  |
| Ambient temperature                                   | -10 °C ... 60 °C  |
| Product weight  | 747 g   |
| Type of mounting                                      | With accessories  |
| Pneumatic connection, port 1                          | G1/2  |
| Pneumatic connection, port 2                          | G1/2  |
| Note on materials                                     | RoHS compliant  |
| Material control panel                                | Process automation<br>POM   |
| Material seals  | NBR   |
| Material housing                                      | Die-cast aluminium  |
| Material membrane                                     | NBR   |