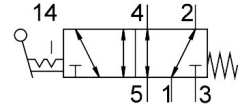


Toggle lever valve VHEF-V-B52-G14

Part number: 5300035

FESTO



[PDF](#) General operating condition

Data sheet

| Feature | Value |
|---|--|
| Valve function | 5/2-way, double solenoid |
| Type of actuation | Manual |
| Construction width | 20 mm |
| Standard nominal flow rate (standardised to DIN 1343) | 1200 l/min |
| pneumatic working port | G1/4 |
| Operating pressure | -0.095 MPa ... 1 MPa |
| Operating pressure | -0.95 bar ... 10 bar |
| Design | Piston gate valve |
| Nominal size | 7 mm |
| Exhaust-air function | Can be throttled |
| Instructions on use | Actuate manually only |
| Sealing principle | Soft |
| Mounting position | Any |
| Manual override | Detenting |
| Type of piloting | Direct |
| Flow direction | Reversible |
| Symbol | 00995879 |
| lap | Overlap |
| Max. switching frequency | 0.5 Hz |
| Explosion protection | Zone 1 (ATEX) Zone 2 (ATEX) Zone 21 (ATEX) Zone 22 (ATEX) |
| Operating medium | Compressed air to ISO 8573-1:2010 [7:-:-] |
| Note on operating and pilot medium | Lubricated operation possible (in which case lubricated operation will always be required) |
| Corrosion resistance class CRC | 1 - Low corrosion stress |
| LABS (PWIS) conformity | VDMA24364-B1/B2-L |
| Media temperature | -10 °C ... 60 °C |
| Ambient temperature | -10 °C ... 60 °C |
| Actuating torque | 1.1 Nm |
| Unlocking torque | 0.6 Nm |
| Max. force on actuation | 200 N |
| Max. lateral force on actuation | 140 N |
| Product weight | 240 g |
| Type of mounting | With through-hole |
| Pneumatic connection, port 1 | G1/4 |

| Feature | Value |
|------------------------------|----------------------------------|
| Pneumatic connection, port 2 | G1/4 |
| Pneumatic connection, port 3 | G1/4 |
| Pneumatic connection, port 4 | G1/4 |
| Pneumatic connection, port 5 | G1/4 |
| Note on materials | RoHS compliant |
| Material cover | Reinforced PA |
| Material seals | NBR |
| Material housing | Anodised wrought aluminium alloy |
| Material lever | Reinforced PA |