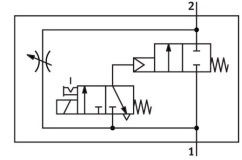


Soft-start valve MS4-DE-1/4-V230

Part number: 529521

FESTO



General operating condition

Data sheet

| Feature | Value |
|---|--|
| Type of actuation | Electrical |
| Mounting position | Any |
| Manual override | Detenting Non-detenting |
| Design | Piston seat |
| Type of reset | Mechanical spring |
| Type of piloting | Piloted |
| Pilot air supply | Internal |
| Flow direction | Non-reversible |
| Symbol | 00991501 |
| Valve function | 2/2 |
| Switching position indicator | With accessories |
| Operating pressure | 4 bar ... 14 bar |
| b value | 0.45 |
| C value | 9.6 l/sbar |
| Standard nominal flow rate (standardised to DIN 1343) | 2000 l/min |
| Duty cycle | 100% |
| Characteristic coil data | 230 V AC: 50/60 Hz, pick-up power 3.0 VA, holding power 2.4 VA |
| Approval | c UL us - Recognised (Oil) |
| Operating medium | Compressed air to ISO 8573-1:2010 [7:4:4] Inert gas |
| Note on operating and pilot medium | Lubricated operation possible (in which case lubricated operation will always be required) |
| Corrosion resistance class CRC | 2 - Moderate corrosion stress |
| LABS (PWIS) conformity | VDMA24364-B1/B2-L |
| Suitable for use with food | See supplementary material information |
| Media temperature | -10 °C ... 60 °C |
| Degree of protection | IP65 |
| Ambient temperature | -10 °C ... 60 °C |
| Product weight | 263 g |
| Electrical connection | Type C Plug To DIN EN 175301-803 Square design |
| Signal status display | With accessories |
| Type of mounting | With accessories |

| Feature | Value |
|------------------------------|--------------------|
| Pneumatic connection, port 1 | G1/4 |
| Pneumatic connection, port 2 | G1/4 |
| Note on materials | RoHS compliant |
| Material seals | NBR |
| Material housing | Die-cast aluminium |