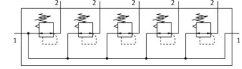


Pressure regulating valve manifold LRB-1/2-D-7-O-K5-MIDI

Part number: 529005

FESTO



 General operating condition

Data sheet

Feature	Value
Size	Midi
Series	D
Actuator lock	Rotary knob with detent
Mounting position	Any
Design	Directly actuated diaphragm regulator With through compressed air supply
Controller function	Output pressure constant With primary pressure compensation With secondary exhausting
Symbol	00995334
Pressure gauge (ANALOG) or Pressure display (DIGITAL)	Prepared for G1/4
Operating pressure	0.1 MPa ... 1.6 MPa
Operating pressure	1 bar ... 16 bar
Pressure regulation range	0.05 MPa ... 0.7 MPa
Pressure regulation range	0.5 bar ... 7 bar
Pressure regulation range	7.25 psi ... 101.5 psi
Max. pressure hysteresis	0.02 MPa
Max. pressure hysteresis	0.2 bar
Max. pressure hysteresis	2.9 psi
Standard nominal flow rate (standardised to DIN 1343)	3800 l/min
Operating medium	Compressed air to ISO 8573-1:2010 [7:4:4]
LABS (PWIS) conformity	VDMA24364-B1/B2-L
Air purity class at output	Compressed air to ISO 8573-1:2010 [7:4:4]
Media temperature	-10 °C ... 60 °C
Ambient temperature	-10 °C ... 60 °C
Product weight	4828 g
Type of mounting	With accessories
Pneumatic connection, port 1	G1/2
Pneumatic connection, port 2	G3/8
Material sub-base	Die-cast zinc
Material control panel	Process automation
Material seals	NBR
Material housing	Die-cast zinc