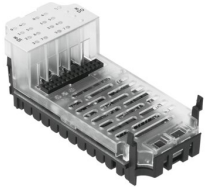


# Input/output module CPX-8DE-8DA

Part number: 526257

FESTO



 General operating condition

## Data sheet

Feature	Value
Dimensions (W x L x H)	50 mm x 107 mm x 50 mm
Product weight	48 g
Ambient temperature	-5 °C ... 50 °C
Storage temperature	-20 °C ... 70 °C
Degree of protection	Depending on the connection block
Corrosion resistance class CRC	(installed)
LABS (PWIS) conformity	VDMA24364-B2-L
Material housing	Makrolon®
LED display	1 Group diagnostics 16 Channel status
Diagnosis	Short circuit/overload per channel Undervoltage of outputs
Number of outputs	8
Parameterisation	Input debounce time Fail-safe per channel Forcing per channel Idle mode per channel Signal extension time Behaviour after short circuit Module monitoring
Operational voltage range DC	18 V ... 30 V
Nominal operating voltage DC	24 V
Intern power consumption nominal operating voltage	Typ. 22 mA
Number of inputs	8
Characteristic for inputs	IEC 1131-T2
Input debounce time	3 ms (0.1 ms, 10 ms, 20 ms, parameterisable)
Max. residual current of inputs per module	0.7 A
Characteristic for outputs	IEC 1131-T2
Switching logic for outputs	PNP (positive switching)
Max. residual current outputs per module	4 A
Max. power supply per channel	0.5 A (12 W lamp load)
Isolation channel - channel	No
Isolation channel - internal bus	Outputs - yes, when using an intermediate air supply
Fuse protection (short circuit)	Internal electronic fuse per channel