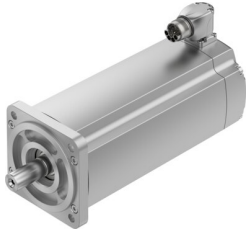


Servo motor EMMT-AS-100-L-HS-RS

Part number: 5255534

FESTO



 General operating condition

Data sheet

Feature	Value
Ambient temperature	-40 °C ... 40 °C
Note on ambient temperature	Up to 80°C with derating of -1.75% per degree Celsius
Max. installation height	4000 m
Note on max. installation height	As of 1,000 m: only with derating of -1.0% per 100 m
Storage temperature	-40 °C ... 70 °C
Relative air humidity	0 - 90%
Conforms to standard	IEC 60034
Temperature class as per EN 60034-1	F
Max. winding temperature	155 °C
Rating class as per EN 60034-1	S1
Temperature monitoring	Digital motor temperature transmission via EnDat® 2.2
Motor type to EN 60034-7	IM V1 IM V3
Mounting position	Any
Degree of protection	IP40
Note on degree of protection	IP67 for motor housing including connection components
Concentricity, coaxiality, axial runout to DIN SPEC 42955	N
Balance quality	G 2.5
Detent torque	<1.0% of peak torque
Bearing lifetime under nominal conditions	20000 h
Interface code, motor out	100A
Electrical connection 1, connection type	Hybrid plug
Electrical connection 1, connector system	M23x1
Electrical connection 1, number of connections/cores	15
Electrical connection 1, connection pattern	00995913
Pollution degree	2
Note on materials	RoHS compliant
Corrosion resistance class CRC	0 - No corrosion stress
LABS (PWIS) conformity	VDMA24364 zone III
Vibration resistance	Transport application test with severity level 2 to FN 942017-4 and EN 60068-2-6
Shock resistance	Shock test with severity level 2 to FN 942017-5 and EN 60068-2-27
Approval	RCM c UL us - Recognised (Oil)
CE mark (see declaration of conformity)	To EU EMC Directive To EU Low Voltage Directive In accordance with EU RoHS Directive

Feature	Value
UKCA marking (see declaration of conformity)	To UK RoHS instructions To UK regulations for electrical equipment
Certificate issuing authority	UL E342973
Nominal operating voltage DC	680 V
Type of winding switch	Star inside
Number of pole pairs	5
Standstill torque	10.8 Nm
Nominal torque	7.2 Nm
Peak torque	30.5 Nm
Nominal rotary speed	2700 rpm
Max. rotational speed	4530 rpm
Max. mechanical speed	13000 rpm
Angular acceleration	$\leq 100000 \text{ rad/s}^2$
Nominal power rating of motor	2030 W
Continuous stall current	7 A
Nominal motor current	4.7 A
Peak current	28.6 A
Motor constant	1.54 Nm/A
Standstill torque constant	1.75 Nm/A
Voltage constant, phase-to-phase	106 mVmin
Phase-phase winding resistance	1.49 Ohm
Phase-phase winding inductance	15.7 mH
Winding longitudinal inductivity Ld (phase)	8.7 mH
Winding cross inductivity Lq (phase)	11.8 mH
Electric time constant	15.8 ms
Thermal time constant	71 min
Thermal resistance	0.46 K/W
Measuring flange	300 x 300 x 20 mm, steel
Total mass moment of inertia of output	5.77 kgcm ²
Product weight	8700 g
Permissible axial shaft load	200 N
Permissible radial shaft load	1110 N
Rotor position sensor	Absolute encoder, single turn
rotor position sensor, manufacturer designation	ECl 1319
rotor position sensor, absolute detectable revolutions	1
Rotor position encoder interface	EnDat 22
Rotor position sensor, encoder measuring principle	Inductive
rotor position sensor, DC operating voltage	5 V
rotor position sensor, DC operating voltage range	3.6 V ... 14 V
rotor position sensor, position values per revolution	524288
Rotor position transducer resolution	19 bit
rotor position sensor, system accuracy of angle measurement	-65 arcsec ... 65 arcsec
Mean time to failure (MTTF), subcomponent	190 years, rotor position encoder
Energy efficiency	ENEFF (CN) / Class 2