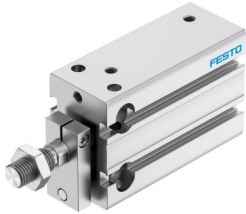


Compact cylinder DPDM-Q-25-30-PA

Part number: 4840829

FESTO



 [General operating condition](#)

Data sheet

| Feature | Value |
|--|--|
| Stroke | 30 mm |
| Piston diameter | 25 mm |
| Cushioning | Elastic cushioning rings/plates at both ends |
| Mounting position | Any |
| Mode of operation | Double-acting |
| Design | Piston Piston rod Profile barrel |
| Position detection | Via proximity switch |
| Symbol | 00991737 |
| Variants | Piston rod at one end |
| Protection against torque/guide | Guide rod with yoke |
| Operating pressure | 0.1 MPa ... 0.8 MPa |
| Operating pressure | 1 bar ... 8 bar |
| Operating medium | Compressed air to ISO 8573-1:2010 [7:4:4] |
| Note on operating and pilot medium | Lubricated operation possible (in which case lubricated operation will always be required) |
| Corrosion resistance class CRC | 2 - Moderate corrosion stress |
| LABS (PWIS) conformity | VDMA24364-B2-L |
| Cleanroom suitability, measured according to ISO 14644-14 | Class 6 according to ISO 14644-1 |
| Ambient temperature | -10 °C ... 80 °C |
| Theoretical force at 0.6 MPa (6 bar, 87 psi) | 295 N |
| Theoretical force at 0.6 MPa (6 bar, 87 psi), return stroke | 247 N |
| Theoretical force at 0.6 MPa (6 bar, 87 psi), advance stroke | 295 N |
| Moving mass for 0 mm stroke | 76 g |
| Additional moving mass per 10 mm stroke | 8 g |
| Basic weight for 0 mm stroke | 223 g |
| Additional weight per 10 mm stroke | 35 g |
| Type of mounting | With through-hole With female thread |
| Pneumatic connection | M5 |
| Note on materials | RoHS compliant |
| Material cover | Wrought aluminium alloy |
| Material seals | TPE-U(PU) |
| Material housing | Anodised wrought aluminium alloy |
| Material piston rod | High-alloy stainless steel |