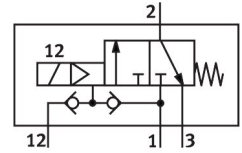


Valve VOFC-LT-M32C-MC-G12-F19

Part number: 4514748

FESTO



[General operating condition](#)

Data sheet

Feature	Value
Valve function	3/2-way, single solenoid, closed
Type of actuation	Electrical
Construction width	51 mm
Standard nominal flow rate (standardised to DIN 1343)	2794 l/min
Operating pressure	0.2 MPa ... 0.8 MPa
Operating pressure	2 bar ... 8 bar
Operating pressure	29 psi ... 116 psi
Design	Piloted piston poppet valve
Type of reset	Mechanical spring
Degree of protection	IP65
Certificate issuing authority	TÜV 968/V 1251.00/24
Nominal size	12 mm
Sealing principle	Hard
Mounting position	Any
Manual override	None
Type of piloting	Piloted
Pilot air supply	External Internal
Flow direction	Non-reversible
Symbol	00992275
Safety function	Safe exhausting
Safety Integrity Level (SIL)	up to SIL 3 high demand mode To SIL 3 Low Demand mode
Note on operating pressure	0 - 0.8 MPa with ext. pilot air
Flow rate Kv pressurisation	2.56 m ³ /h
Flow rate Kv exhaust	3.17 m ³ /h
Standard nominal flow rate 2-3	3466 l/min
Switching time off	14 ms
Switching time on	25 ms
Explosion protection	Zone 1 (ATEX) Zone 2 (ATEX) Zone 21 (ATEX) Zone 22 (ATEX)
Operating medium	Compressed air to ISO 8573-1:2010 [7:2:2]
Corrosion resistance class CRC	4 - Very high corrosion stress
LABS (PWIS) conformity	VDMA24364 zone III

Feature	Value
Media temperature	-25 °C ... 60 °C
Ambient temperature	-25 °C ... 60 °C
Product weight	880 g
Pneumatic connection, port 1	G1/2
Pneumatic connection, port 2	G1/2
Pneumatic connection, port 3	G1/2
Note on materials	RoHS compliant
Material seals	NBR
Material housing	Ematal coated aluminium