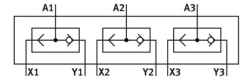
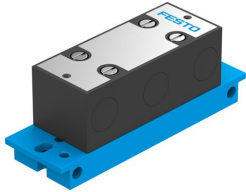


OR block OS-PK-3-6/3

Part number: 4232

FESTO



 General operating condition

Data sheet

Feature	Value
Valve function	OR function
Pneumatic connection, port 1	PK-3
Pneumatic connection, port 2	PK-3
Type of mounting	Front panel mounting
Standard nominal flow rate (standardised to DIN 1343)	100 l/min
Operating pressure	1.6 bar ... 8 bar
Ambient temperature	-10 °C ... 60 °C
Material housing	POM
Operating medium	Compressed air to ISO 8573-1:2010 [7:-:-]
Explosion protection	The information in the certificate must be observed! Zone 1 (ATEX) Zone 2 (ATEX) Zone 21 (ATEX) Zone 22 (ATEX)
Nominal size	2.5 mm
Mounting position	Any
Symbol	00991457
Note on operating and pilot medium	Lubricated operation possible (in which case lubricated operation will always be required)
LABS (PWIS) conformity	VDMA24364-B1/B2-L
Media temperature	-10 °C ... 60 °C
Product weight	90 g
Pneumatic connection, port 3	PK-3
Material seals	NBR