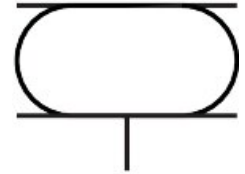


# Bellows cylinder EB-250-185

Part number: 36493

FESTO



 General operating condition

## Data sheet

Feature	Value
Size	250
Required installation diameter	265 mm
Stroke	185 mm
Max. extended height	275 mm
Max. angle of inclination	25 deg
Max. offset	20 mm
Min. installation height	75 mm
Mounting position	Any
Mode of operation	Single-acting
Symbol	00991205
Operating pressure	0 MPa ... 0.8 MPa
Operating pressure	0 bar ... 8 bar
Operating pressure	0 psi ... 116 psi
Operating medium	Compressed air to ISO 8573-1:2010 [-:::4]
Note on operating and pilot medium	Lubricated operation not possible
Corrosion resistance class CRC	2 - Moderate corrosion stress
LABS (PWIS) conformity	VDMA24364-B1/B2-L
Ambient temperature	-40 °C ... 70 °C
Reset force	200 N
Product weight	3000 g
Type of mounting	With female thread
Pneumatic connection	G3/4
Note on materials	RoHS compliant
Material bellows	NR/BR
Material housing	Steel Galvanised