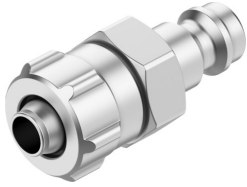


Quick coupling plug KS3-CK-6

Part number: 3478

FESTO



 [General operating condition](#)

Data sheet

Feature	Value
Nominal size	4.9 mm
Operating pressure complete temperature range	-0.095 MPa ... 1.2 MPa
Operating pressure complete temperature range	-0.95 bar ... 12 bar
Operating pressure complete temperature range	-13.775 psi ... 174 psi
Standard nominal flow rate (standardised to DIN 1343)	216 l/min ... 464 l/min
Nominal flow rate standardised according to ISO 8778	234.1 l/min ... 503 l/min
Operating medium	Compressed air to ISO 8573-1:2010 [7::-:]
Note on operating and pilot medium	Lubricated operation possible
Corrosion resistance class CRC	1 - Low corrosion stress
LABS (PWIS) conformity	VDMA24364-B1/B2-L
Ambient temperature	-10 °C ... 60 °C
Product weight	21 g
Pneumatic connection, port 1	For tubing outer diameter of 8 mm For barbed fitting I.D. 6 mm with union nut
Material union nut	Wrought aluminium alloy, anodised
Note on materials	RoHS compliant
Information on materials	Brass, nickel-plated