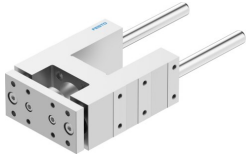


# Guide unit FENG-40-100-KF

Part number: 34500

FESTO



 [General operating condition](#)

## Data sheet

Feature	Value
Size	40
Stroke	100 mm
Mounting position	Any
Guide	Recirculating ball bearing guide
Design	Guidance
Explosion protection	The information in the certificate must be observed!
LABS (PWIS) conformity	VDMA24364-B2-L
Ambient temperature	-20 °C ... 80 °C
Max. force F <sub>y</sub>	1000 N
Max. force F <sub>y</sub> static	1260 N
Max. force F <sub>z</sub>	1000 N
Max. force F <sub>z</sub> static	1260 N
Max. moment M <sub>x</sub>	44 Nm
Max. torque M <sub>x</sub> static	55 Nm
Max. moment M <sub>y</sub>	52 Nm
Max. torque M <sub>y</sub> static	65 Nm
Max. moment M <sub>z</sub>	52 Nm
Max. torque M <sub>z</sub> static	65 Nm
Displacement force	15 N
Product weight	2690 g
Type of mounting	With female thread
Note on materials	RoHS compliant
Material guide component	Tempered steel
Material housing	Anodised wrought aluminium alloy
Material yoke plate	Anodised wrought aluminium alloy